

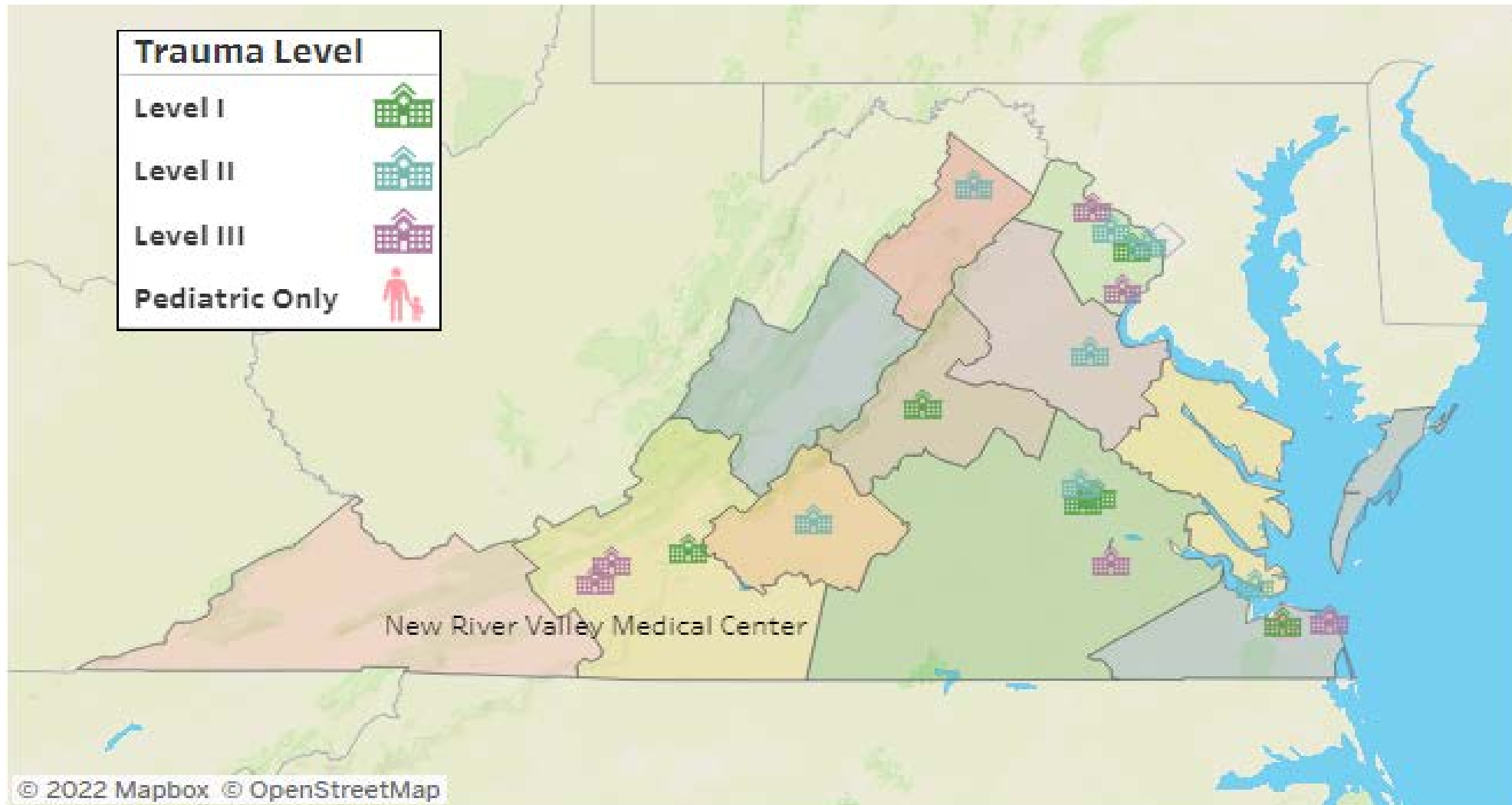


Post-Crash Care: Virginia's Trauma System

Kelley Rumsey, DNP, RN, TCRN, CEN, ACNP, PNP
Pediatric Trauma Program Manager

May 5, 2022

The Virginia Trauma System



What makes a hospital a trauma center?

- A specialized hospital facility distinguished by **immediate** availability of personnel and resources to care for injured patients.
- Many patients who receive **initial** care in the community are transferred to a Trauma Center for **definitive** care.



Trauma Response

- One defining characteristic of a trauma center is the specific response to the arrival of an injured person.
- Immediately prioritized for assessment of the presence of time critical injuries.
- Designated team response.
 - Emergency department
 - Nursing
 - Surgery
 - Orthopedics
 - Neurosurgery
 - Imaging
 - Security/law enforcement/forensics
 - Chaplain/Social Workers/Child Life Specialists



What's with all the levels?

Level I

Level II

Level III

Level I Pediatric

Level I Burn



Level I Trauma Center

- Highest tier trauma care in the system.
- Has resources for **definitive** care of all types of injuries
- Must meet rigorous criteria
- Provides care across the entire continuum
 - ED-OR-ICU-Inpatient floor
 - Rehab professionals such as Physical & Occupational therapists
- Trauma Research
- Medical Education



What is a Level I *Pediatric* Trauma Center?

- A facility with all of the resources of a Level I Trauma Center PLUS
- **specialized, immediately available resources to care for injured infants and children.**
- Highest tier trauma care in the system.
- Has resources for any/all types of injuries
- Must meet rigorous criteria
- Provides care across the entire continuum
 - ED-OR-ICU-Inpatient floor
 - Rehab professionals such as Physical & Occupational therapists
 - Child Life Specialists, Social workers and Chaplains
- Trauma Research
- Medical Education



What is a Level I *Burn* Center?

- A facility with all of the resources of a Level I Trauma Center PLUS
- **Specialized, immediately available resources to care for someone with a burn injury.**
 - **Thermal, chemical, radiological**
- Highest tier trauma care in the system.
- Has resources for any/all types of injuries
- Must meet rigorous criteria
- Provides care across the entire continuum
 - ED-OR-ICU-Inpatient floor
 - Rehab professionals such as Physical & Occupational therapists
 - Child Life Specialists, Social workers and Chaplains
- Trauma Research
- Medical Education



What is a Level II Trauma Center?

- A facility with clinical resources to care for the most injured
- Most of the same clinical resources as the Level I center
- Research not required
- Medical Education not required
- May transfer a limited number of injury types to the Level I.
- Must meet rigorous criteria
- Provides care across the entire continuum
 - ED-OR-ICU-Inpatient floor
 - Rehab professionals such as Physical & Occupational therapists

What is a Level III Trauma Center?

- A facility with a dedicated Emergency Department response to the arrival of an injured person.
- Provides **initial assessment and stabilization**.
- May admit patients with isolated injuries.
- Transfers complex trauma patients to the Level I or Level II center
- Lowest tier Trauma Center in the VA System

Putting it all together-An inclusive trauma system

- How do trauma centers collaborate in the care of the injured?
- What role do the non-designated trauma centers and Freestanding ED's play?



500,000 square feet
16 stories
4 levels of parking



Connected to the outpatient
Children's Pavilion – completing
an entire city block dedicated to
caring for kids!



72 beds – all private rooms
48 acute and 24 intensive care



ER, Level 1 pediatric trauma
center and helipad



Family amenities and spaces for
play and education



\$400 million project
Not possible without community
support



Opening spring 2023

View from Marshall Street

5/9/2022