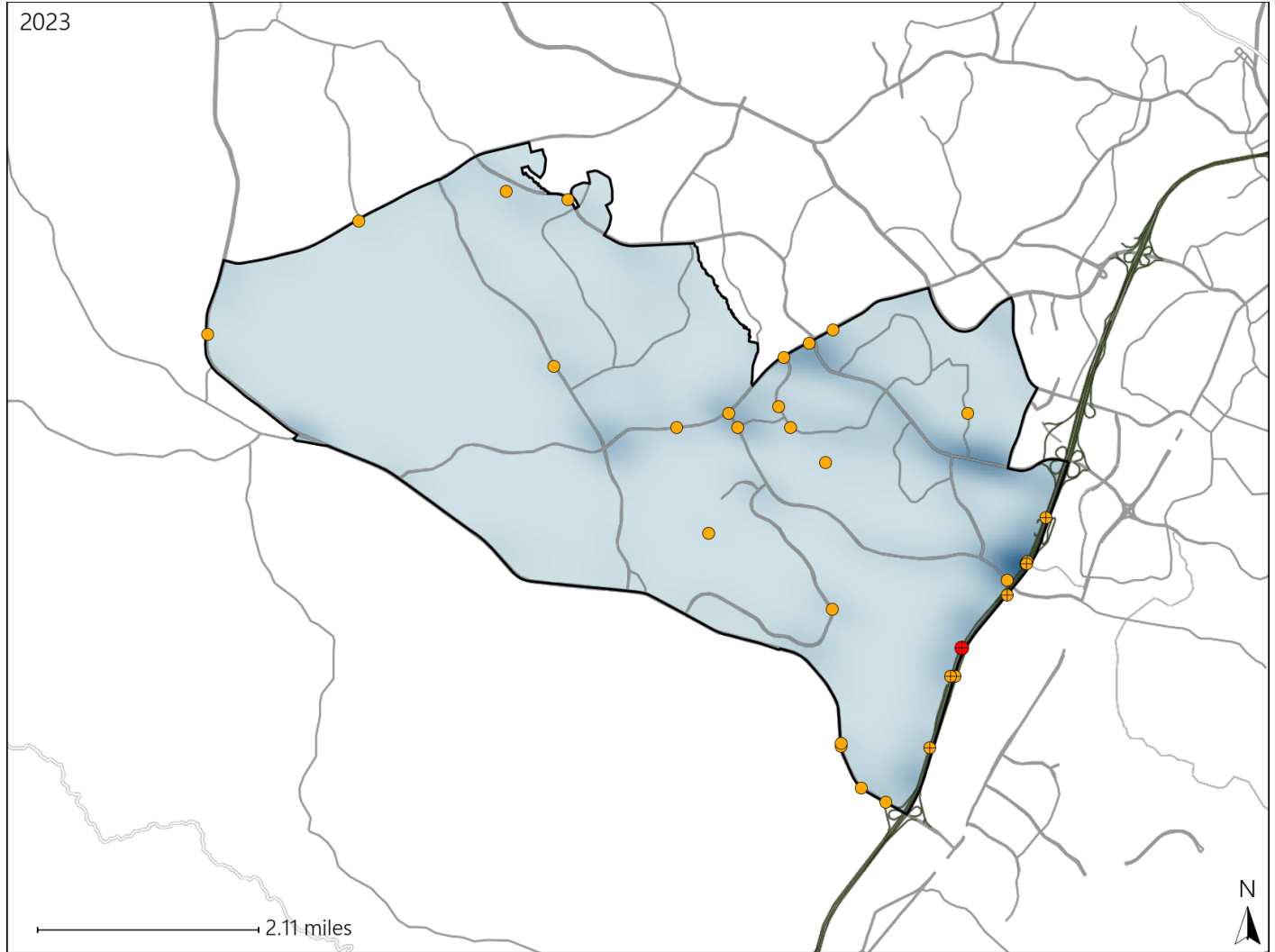


Virginia House District 24 Crash Statistics

Report Generated May, 2024

	Count	Highest Time Period(s)	Highest Day(s)	Highest Month(s)
Fatal Crashes	1	3:00am - 5:59am	Sunday	December
Resulting Fatalities	1	(100%)	(100%)	(100%)
Serious Injury Crashes	31	6:00pm - 8:59pm	Saturday - Thursday	July
		(26%)	(52%)	(19%)



House District 24 Crashes

Interstate Crashes

- Fatal
- Serious Injury

Non-interstate Crashes

- Fatal
- Serious Injury

The blue gradient represents the density of all crashes.

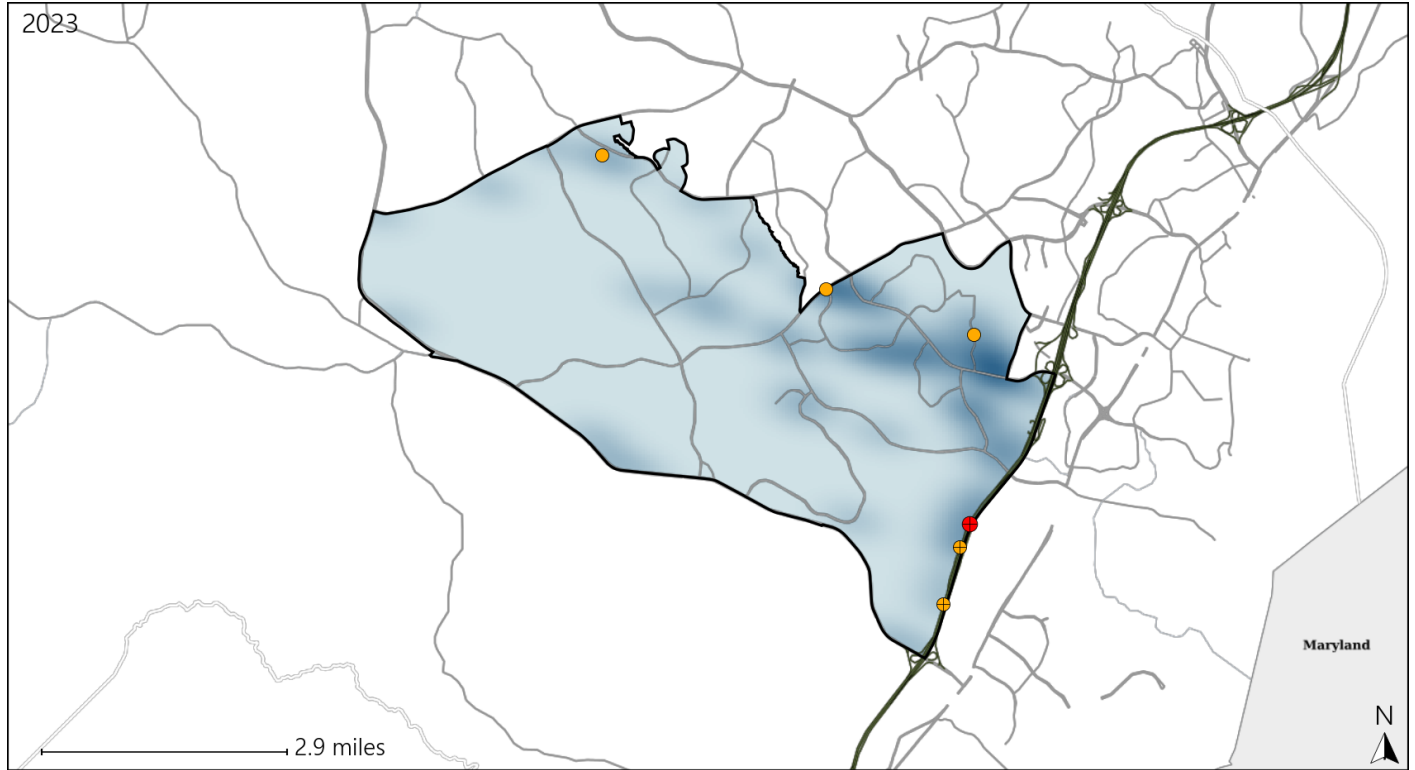


Available Crash Data - Calendar Year (CY)	CY 2020	CY 2021	CY 2022	CY 2023
Total Crashes	520	672	765	768
Fatal Crashes	3	4	2	1
Injury Crashes	130	168	213	246

Virginia House District 24 Alcohol Crash Statistics

Report Generated May, 2024

	Count	Highest Time Period(s)	Highest Day(s)	Highest Month(s)
Fatal Crashes	1	3:00am - 5:59am	Sunday	December
Resulting Fatalities	1	(100%)	(100%)	(100%)
Serious Injury Crashes	5	9:00pm - 11:59pm	Saturday	April - December
		(60%)	(40%)	(40%)



House District 24 Alcohol-Related Crashes

Interstate Crashes Non-interstate Crashes
 ● Fatal ● Fatal
 ⊕ Serious Injury ⊕ Serious Injury

The blue gradient represents the density of all alcohol-related crashes.

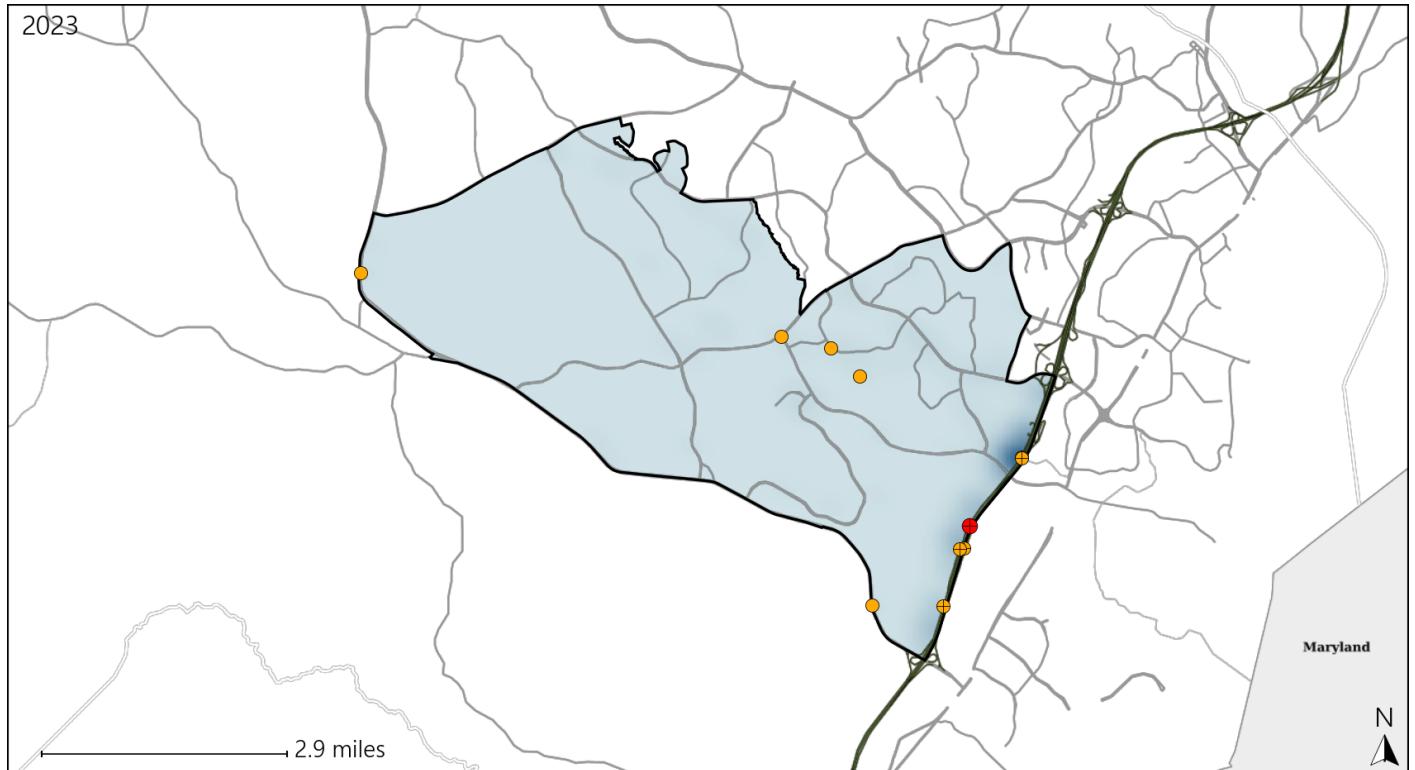


Available Crash Data - Calendar Year (CY)	CY 2020	CY 2021	CY 2022	CY 2023
Total Crashes	520	672	765	768
Fatal Crashes	3	4	2	1
Injury Crashes	130	168	213	246
Alcohol-Related Fatal Crashes	0	1	0	1
Percent of Alcohol-Related Fatal Crashes to Total Fatal Crashes	0%	25%	0%	100%
Alcohol-Related Injury Crashes	9	12	11	20
Percent of Alcohol-Related Injury Crashes to Total Injury Crashes	7%	7%	5%	8%

Virginia House District 24 Speed Crash Statistics

Report Generated May, 2024

	Count	Highest Time Period(s)	Highest Day(s)	Highest Month(s)
Fatal Crashes	1	3:00am - 5:59am	Sunday	December
Resulting Fatalities	1	(100%)	(100%)	(100%)
Serious Injury Crashes	10	9:00pm - 11:59pm	Monday - Saturday	July - September
		(30%)	(60%)	(60%)



House District 24 Speed-Related Crashes

Interstate Crashes Non-interstate Crashes
 ● Fatal ● Fatal
 ⊕ Serious Injury ⊕ Serious Injury

The blue gradient represents the density of all speed-related crashes.

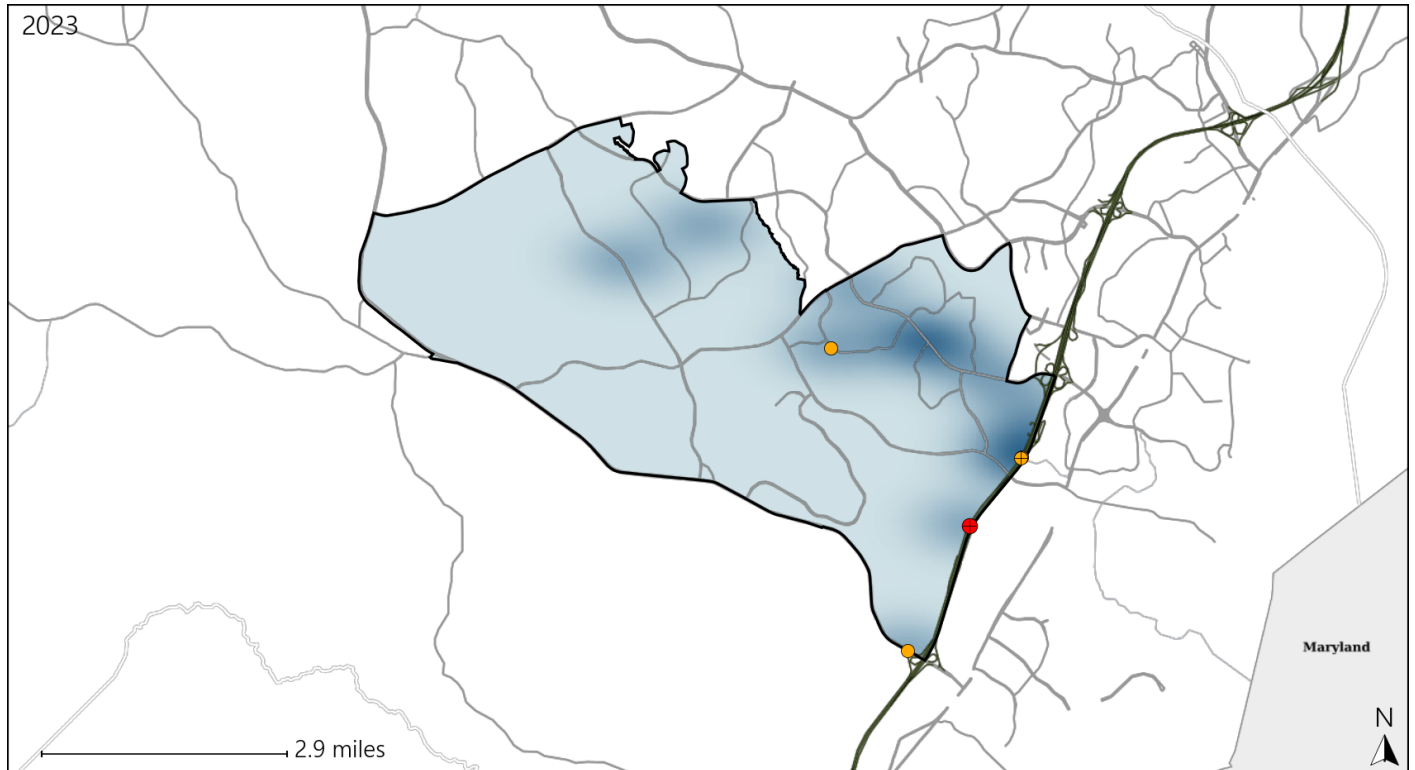


Available Crash Data - Calendar Year (CY)	CY 2020	CY 2021	CY 2022	CY 2023
Total Crashes	520	672	765	768
Fatal Crashes	3	4	2	1
Injury Crashes	130	168	213	246
Speed-Related Fatal Crashes	2	2	1	1
Percent of Speed-Related Fatal Crashes to Total Fatal Crashes	67%	50%	50%	100%
Speed-Related Injury Crashes	32	45	50	55
Percent of Speed-Related Injury Crashes to Total Injury Crashes	25%	27%	23%	22%

Virginia House District 24 Unrestrained Crash Statistics

Report Generated May, 2024

	Count	Highest Time Period(s)	Highest Day(s)	Highest Month(s)
Fatal Crashes	1	3:00am - 5:59am	Sunday	December
Unrestrained Fatalities	1	(100%)	(100%)	(100%)
Serious Injury Crashes	4	Noon - 2:59pm	Sunday	August • February
		(50%)	(75%)	(50%)



House District 24 Unrestrained-Related Crashes

- | | |
|--------------------|------------------------|
| Interstate Crashes | Non-interstate Crashes |
| Fatal | Fatal |
| Serious Injury | Serious Injury |

The blue gradient represents the density of all unrestrained-related crashes.

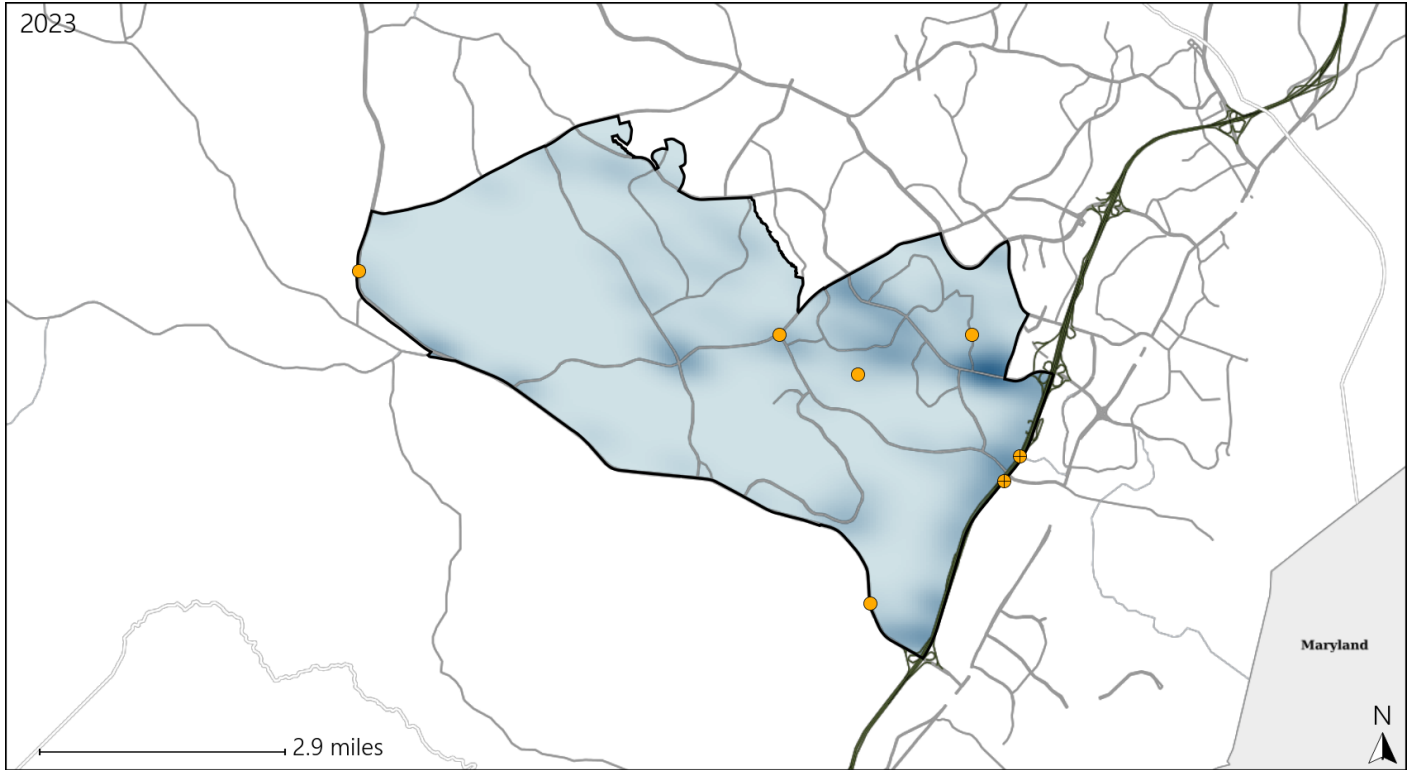


Available Crash Data - Calendar Year (CY)	CY 2020	CY 2021	CY 2022	CY 2023
Total Crashes	520	672	765	768
Fatalities	3	6	2	1
Injuries	215	293	346	416
Unrestrained Fatalities	1	2	0	1
Percent of Unrestrained Fatalities to Total Fatalities	33%	33%	0%	100%
Unrestrained Injuries	11	17	14	11
Percent of Unrestrained Injuries to Total Injuries	5%	6%	4%	3%

Virginia House District 24 Distracted Driving Crash Statistics

Report Generated May, 2024

	Count	Highest Time Period(s)	Highest Day(s)	Highest Month(s)
Fatal Crashes	0	-	-	-
Resulting Fatalities	0	-	-	-
Serious Injury Crashes	7	Midnight - 2:59am (43%)	Monday - Saturday (58%)	January - September (58%)



House District 24 Distracted Driving-Related Crashes

- | | |
|--------------------|------------------------|
| Interstate Crashes | Non-interstate Crashes |
| ● Fatal | ● Fatal |
| ● Serious Injury | ● Serious Injury |

The blue gradient represents the density of all distracted driving-related crashes.



Available Crash Data - Calendar Year (CY)	CY 2020	CY 2021	CY 2022	CY 2023
Total Crashes	520	672	765	768
Fatal Crashes	3	4	2	1
Injury Crashes	130	168	213	246
Distracted Driving-Related Fatal Crashes	2	1	1	0
Percent of Distracted Driving-Related Fatal Crashes to Total Fatal Crashes	67%	25%	50%	0%
Distracted Driving-Related Injury Crashes	29	33	46	46
Percent of Distracted Driving-Related Injury Crashes to Total Injury Crashes	22%	20%	22%	19%