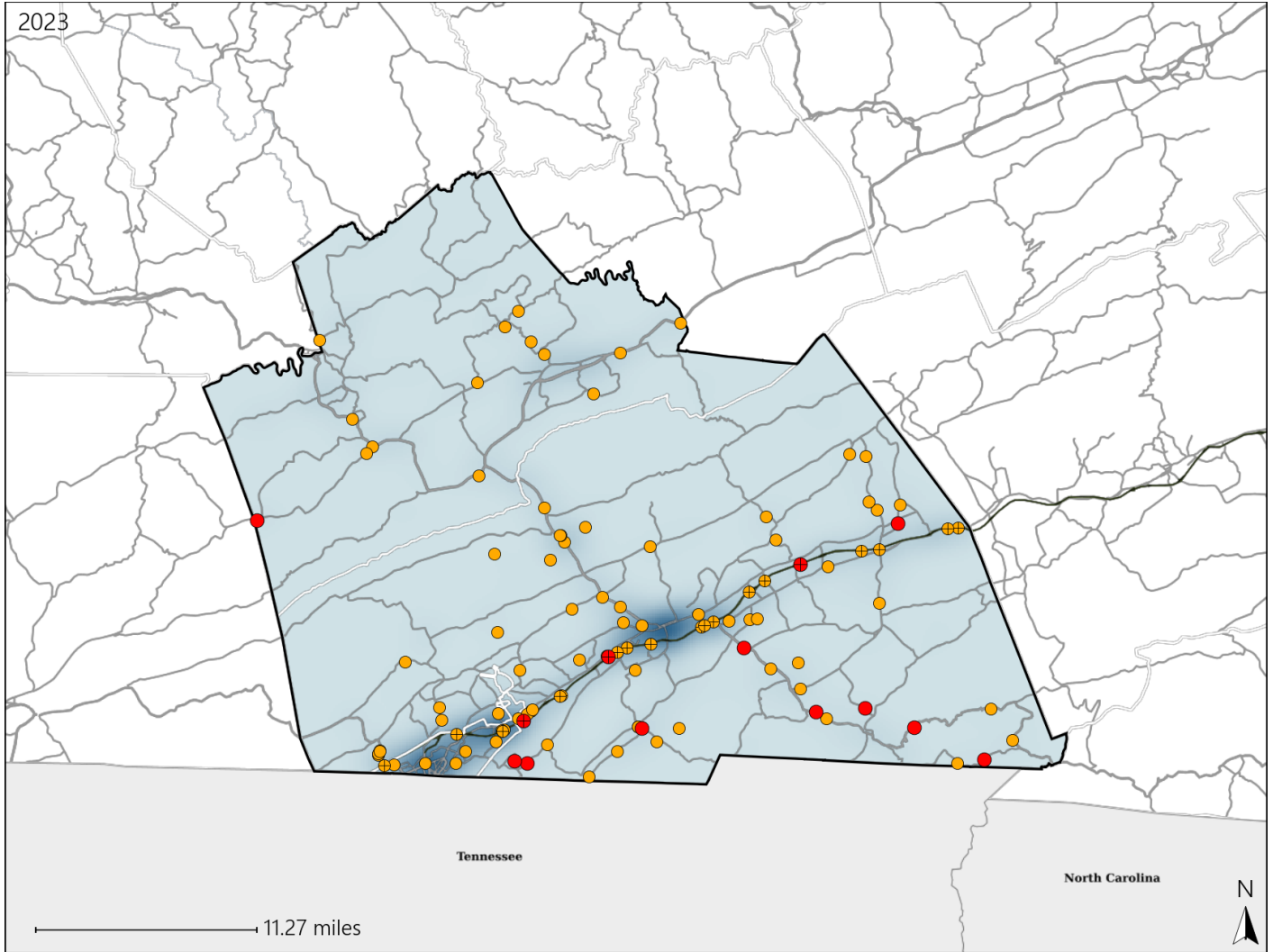


Virginia House District 44 Crash Statistics

Report Generated May, 2024

	Count	Highest Time Period(s)	Highest Day(s)	Highest Month(s)
Fatal Crashes	13	3:00pm - 5:59pm	Saturday • Sunday	June • October
Resulting Fatalities	14	(38%)	(46%)	(46%)
Serious Injury Crashes	94	3:00pm - 5:59pm	Saturday	May
		(28%)	(21%)	(15%)



House District 44 Crashes

Interstate Crashes

- Fatal
- Serious Injury

Non-interstate Crashes

- Fatal
- Serious Injury

The blue gradient represents the density of all crashes.

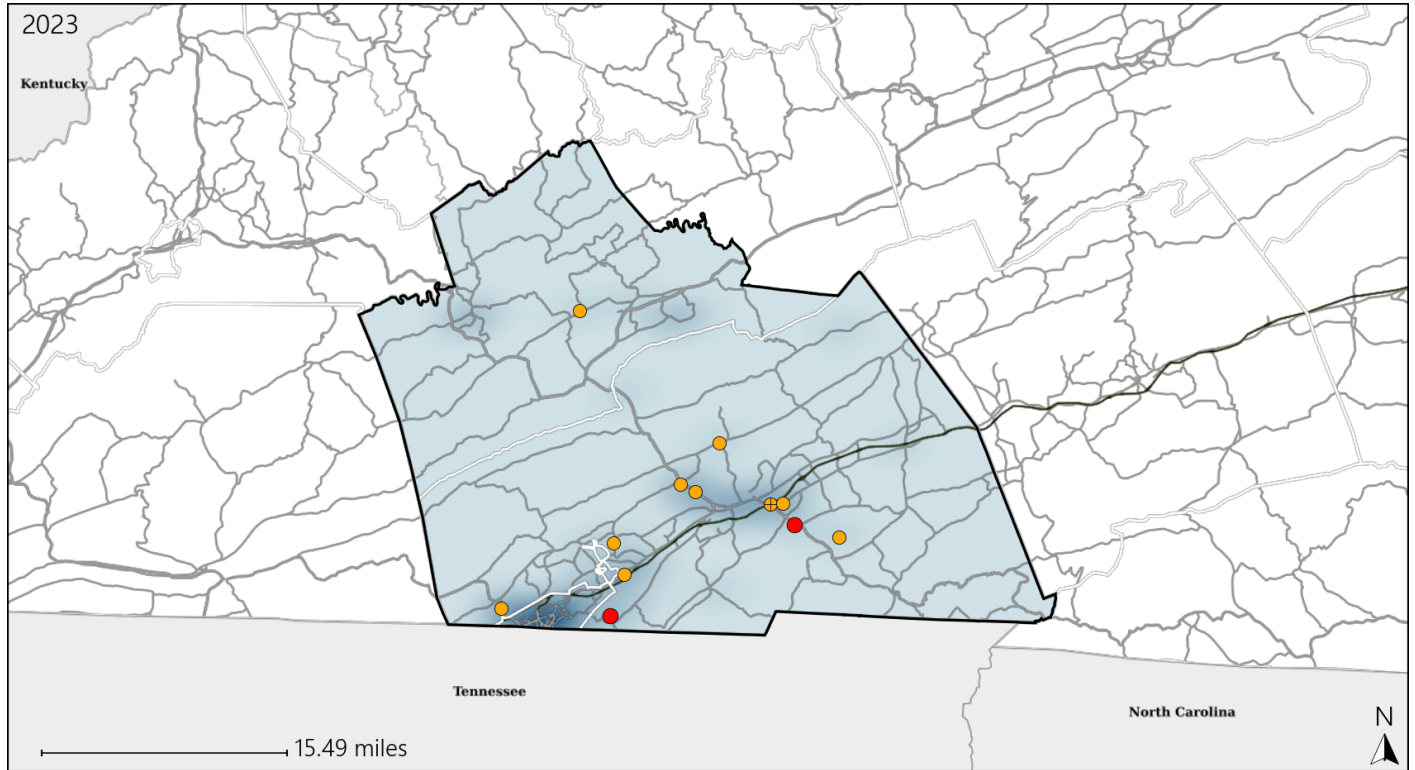


Available Crash Data - Calendar Year (CY)	CY 2020	CY 2021	CY 2022	CY 2023
Total Crashes	1432	1519	1617	1687
Fatal Crashes	15	13	13	13
Injury Crashes	436	475	540	576

Virginia House District 44 Alcohol Crash Statistics

Report Generated May, 2024

	Count	Highest Time Period(s)	Highest Day(s)	Highest Month(s)
Fatal Crashes	2	3:00pm - 5:59pm	Saturday	April • June
Resulting Fatalities	2	9:00pm - 11:59pm (100%)	(100%)	(100%)
Serious Injury Crashes	10	3:00pm - 5:59pm (30%)	Saturday (40%)	September (30%)



House District 44 Alcohol-Related Crashes

Interstate Crashes

Non-interstate Crashes

- Fatal
- Serious Injury

- Fatal
- Serious Injury

The blue gradient represents the density of all alcohol-related crashes.

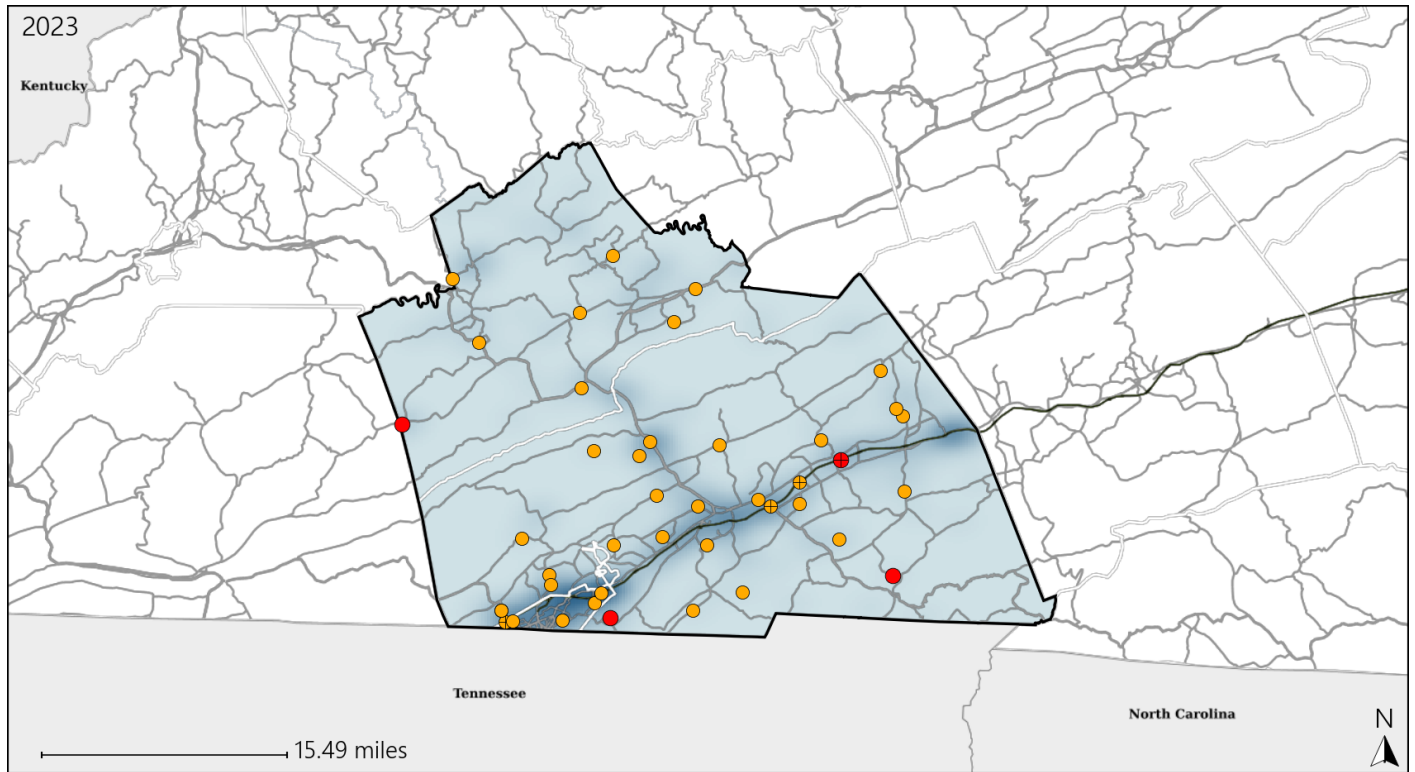


Available Crash Data - Calendar Year (CY)	CY 2020	CY 2021	CY 2022	CY 2023
Total Crashes	1432	1519	1617	1687
Fatal Crashes	15	13	13	13
Injury Crashes	436	475	540	576
Alcohol-Related Fatal Crashes	6	1	0	2
Percent of Alcohol-Related Fatal Crashes to Total Fatal Crashes	40%	8%	0%	15%
Alcohol-Related Injury Crashes	30	20	27	25
Percent of Alcohol-Related Injury Crashes to Total Injury Crashes	7%	4%	5%	4%

Virginia House District 44 Speed Crash Statistics

Report Generated May, 2024

	Count	Highest Time Period(s)	Highest Day(s)	Highest Month(s)
Fatal Crashes	4	3:00pm - 5:59pm	Sunday	June
Resulting Fatalities	5	(50%)	(50%)	(50%)
Serious Injury Crashes	38	3:00pm - 5:59pm 9:00am - 11:59am	Saturday • Tuesday	May
		(48%)	(42%)	(18%)



House District 44 Speed-Related Crashes

Interstate Crashes Non-interstate Crashes
 ● Fatal ● Fatal
 ⊕ Serious Injury ⊕ Serious Injury

The blue gradient represents the density of all speed-related crashes.

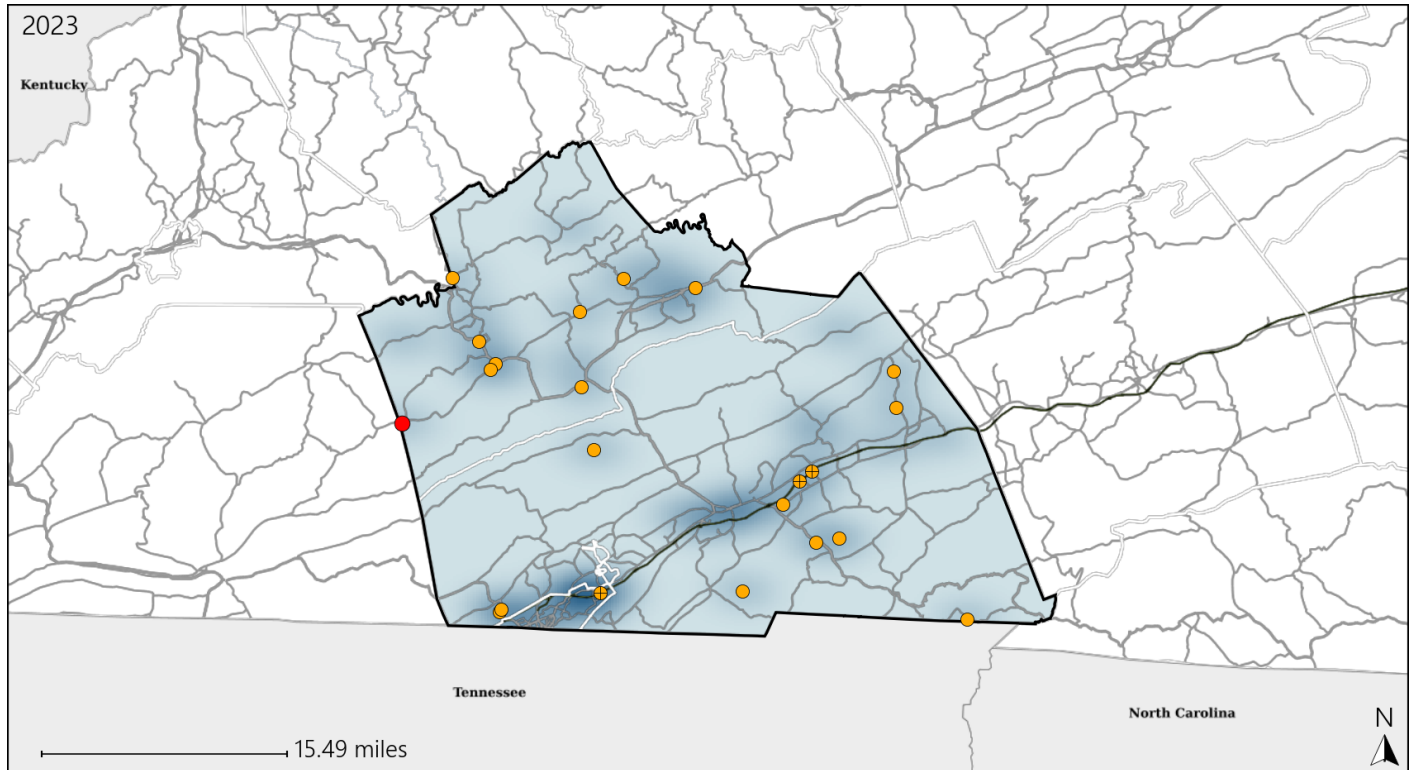


Available Crash Data - Calendar Year (CY)	CY 2020	CY 2021	CY 2022	CY 2023
Total Crashes	1432	1519	1617	1687
Fatal Crashes	15	13	13	13
Injury Crashes	436	475	540	576
Speed-Related Fatal Crashes	9	3	4	4
Percent of Speed-Related Fatal Crashes to Total Fatal Crashes	60%	23%	31%	31%
Speed-Related Injury Crashes	154	141	130	122
Percent of Speed-Related Injury Crashes to Total Injury Crashes	35%	30%	24%	21%

Virginia House District 44 Unrestrained Crash Statistics

Report Generated May, 2024

	Count	Highest Time Period(s)	Highest Day(s)	Highest Month(s)
Fatal Crashes	1	9:00pm - 11:59pm	Monday	February
Unrestrained Fatalities	2	(100%)	(100%)	(100%)
Serious Injury Crashes	21	6:00am - 8:59am	Monday • Sunday	April • October
		(29%)	(38%)	(38%)



House District 44 Unrestrained-Related Crashes

Interstate Crashes

Non-interstate Crashes

- Fatal
- Serious Injury

- Fatal
- Serious Injury

The blue gradient represents the density of all unrestrained-related crashes.

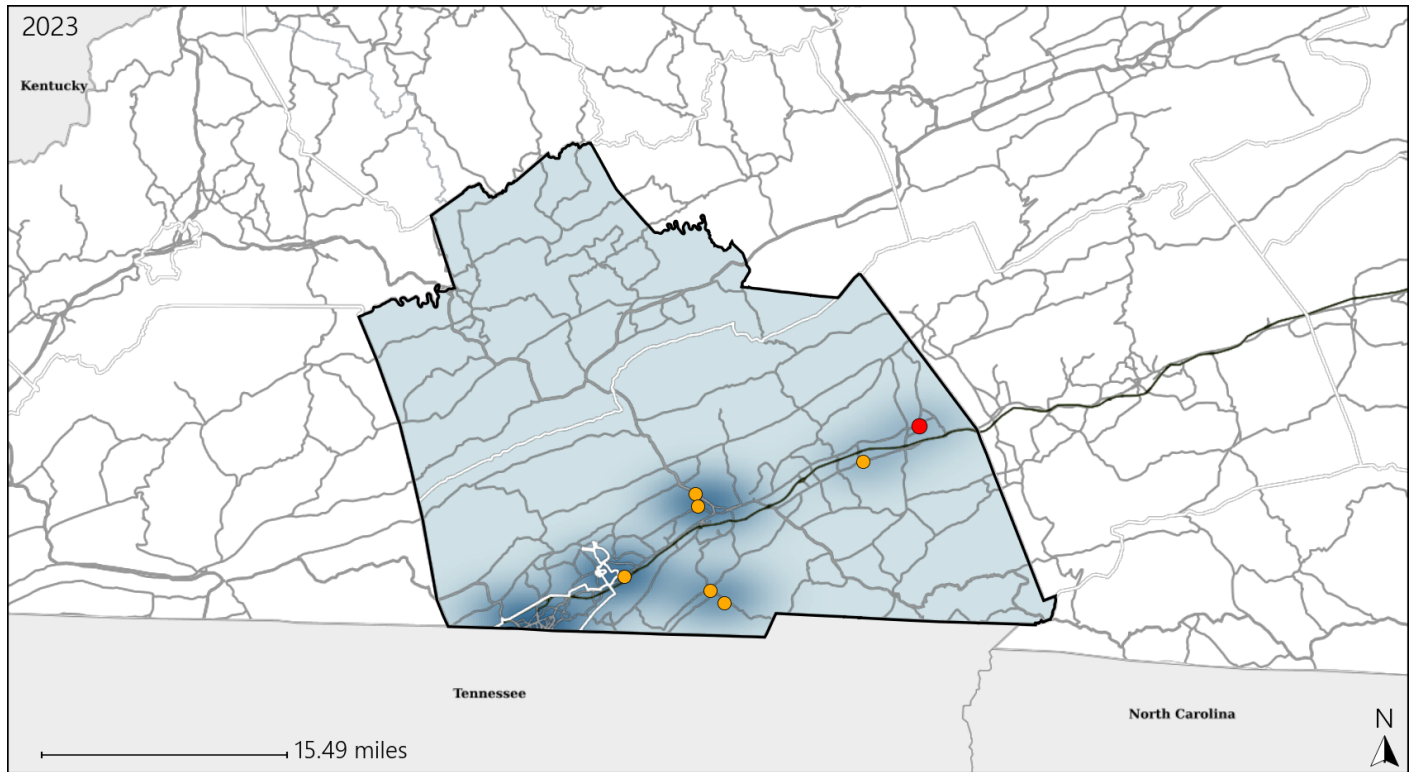


Available Crash Data - Calendar Year (CY)	CY 2020	CY 2021	CY 2022	CY 2023
Total Crashes	1432	1519	1617	1687
Fatalities	17	15	15	14
Injuries	623	642	766	833
Unrestrained Fatalities	8	5	4	2
Percent of Unrestrained Fatalities to Total Fatalities	47%	33%	27%	14%
Unrestrained Injuries	73	38	60	50
Percent of Unrestrained Injuries to Total Injuries	12%	6%	8%	6%

Virginia House District 44 Pedestrian Crash Statistics

Report Generated May, 2024

	Count	Highest Time Period(s)	Highest Day(s)	Highest Month(s)
Fatal Crashes	1	6:00pm - 8:59pm	Thursday	October
Pedestrian Fatalities	1	(100%)	(100%)	(100%)
Serious Injury Crashes	6	3:00pm - 5:59pm 9:00pm - 11:59pm	Thursday	August
		(66%)	(33%)	(33%)



House District 44 Pedestrian-Related Crashes

- | | |
|--|--|
| Interstate Crashes | Non-interstate Crashes |
| ● Fatal | ● Fatal |
| ⊕ Serious Injury | ● Serious Injury |

The blue gradient represents the density of all pedestrian-related crashes.

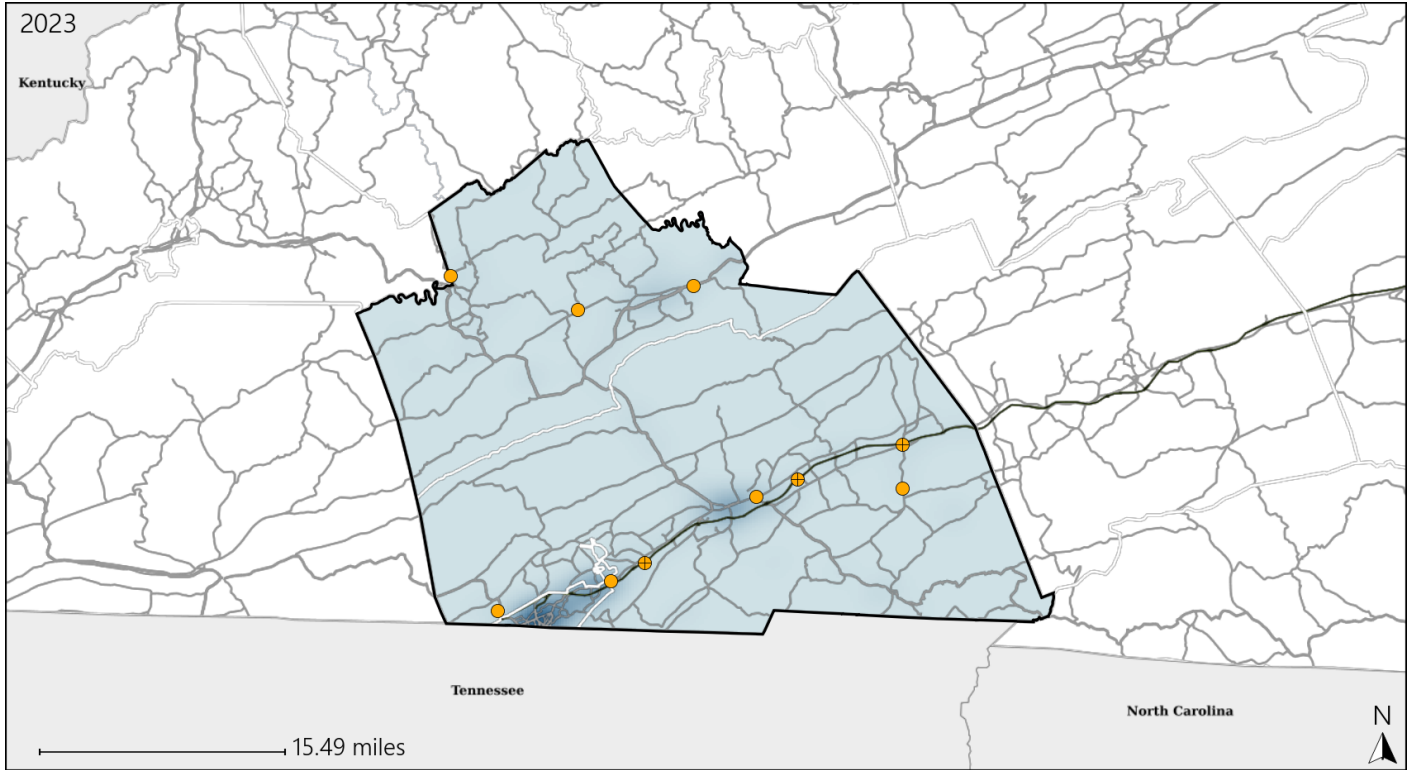


Available Crash Data - Calendar Year (CY)	CY 2020	CY 2021	CY 2022	CY 2023
Total Crashes	1432	1519	1617	1687
Fatal Crashes	15	13	13	13
Injury Crashes	436	475	540	576
Pedestrian-Related Fatal Crashes	0	2	3	1
Percent of Pedestrian-Related Fatal Crashes to Total Fatal Crashes	0%	15%	23%	8%
Pedestrian-Related Injury Crashes	6	8	4	13
Percent of Pedestrian-Related Injury Crashes to Total Injury Crashes	1%	2%	1%	2%

Virginia House District 44 Distracted Driving Crash Statistics

Report Generated May, 2024

	Count	Highest Time Period(s)	Highest Day(s)	Highest Month(s)
Fatal Crashes	0	-	-	-
Resulting Fatalities	0	-	-	-
Serious Injury Crashes	10	3:00pm - 5:59pm (30%)	Friday (40%)	April • January (40%)



House District 44 Distracted Driving-Related Crashes

- | | |
|--|--|
| Interstate Crashes | Non-interstate Crashes |
| ● Fatal | ● Fatal |
| ⊕ Serious Injury | ⊕ Serious Injury |

The blue gradient represents the density of all distracted driving-related crashes.



Available Crash Data - Calendar Year (CY)	CY 2020	CY 2021	CY 2022	CY 2023
Total Crashes	1432	1519	1617	1687
Fatal Crashes	15	13	13	13
Injury Crashes	436	475	540	576
Distracted Driving-Related Fatal Crashes	0	3	1	0
Percent of Distracted Driving-Related Fatal Crashes to Total Fatal Crashes	0%	23%	8%	0%
Distracted Driving-Related Injury Crashes	72	90	83	98
Percent of Distracted Driving-Related Injury Crashes to Total Injury Crashes	17%	19%	15%	17%