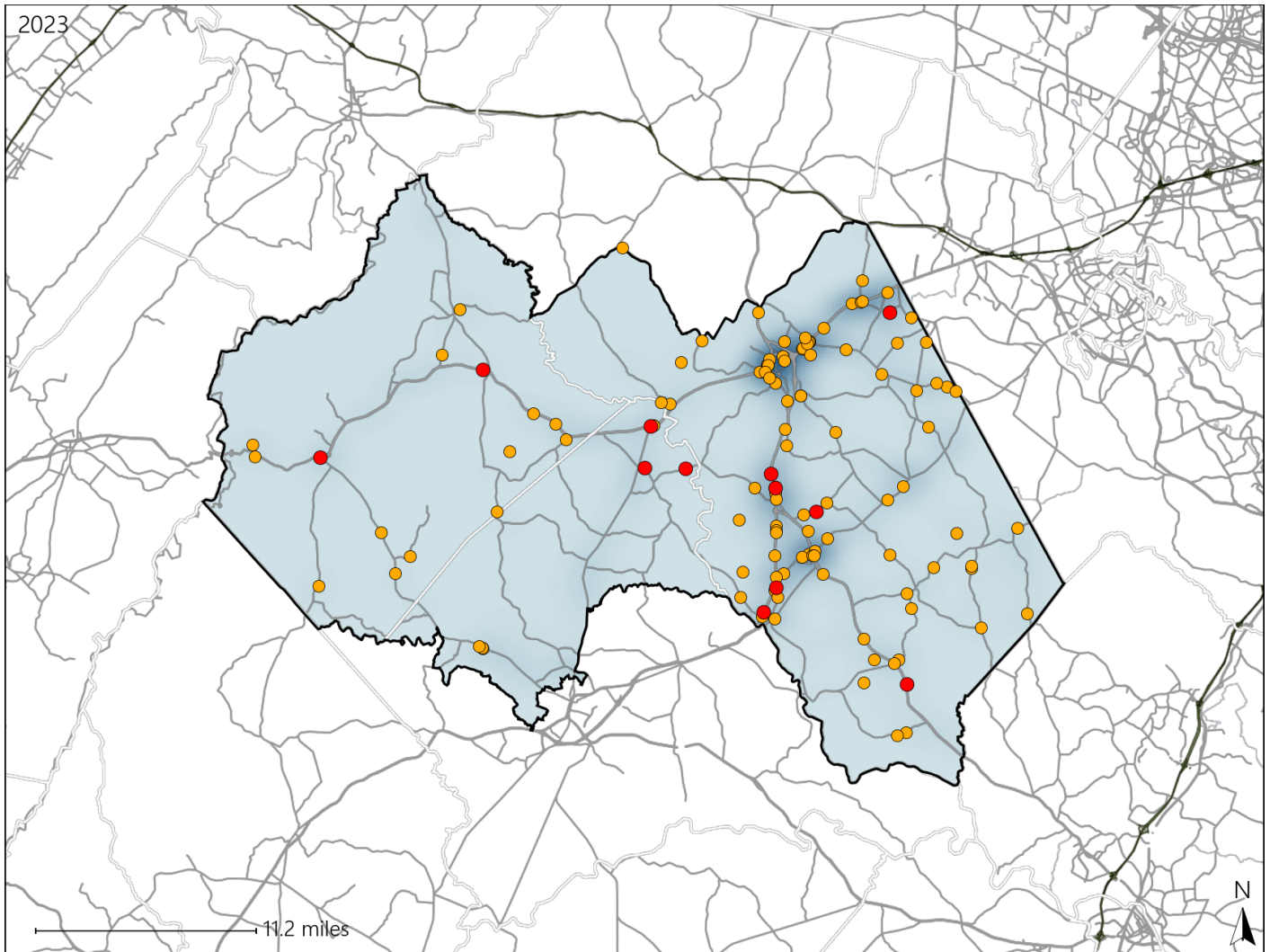


# Virginia House District 61 Crash Statistics

Report Generated May, 2024

	Count	Highest Time Period(s)	Highest Day(s)	Highest Month(s)
<b>Fatal Crashes</b>	<b>12</b>	<b>6:00pm - 8:59pm</b>	<b>Wednesday</b>	<b>October</b>
<b>Resulting Fatalities</b>	<b>12</b>	(25%)	(33%)	(25%)
<b>Serious Injury Crashes</b>	<b>114</b>	<b>3:00pm - 5:59pm</b> <b>6:00pm - 8:59pm</b>	<b>Friday</b>	<b>June</b>
		(38%)	(22%)	(15%)



### House District 61 Crashes

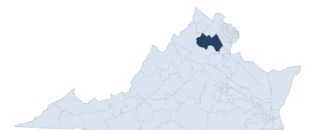
Interstate Crashes

- Fatal
- Serious Injury

Non-interstate Crashes

- Fatal
- Serious Injury

The blue gradient represents the density of all crashes.

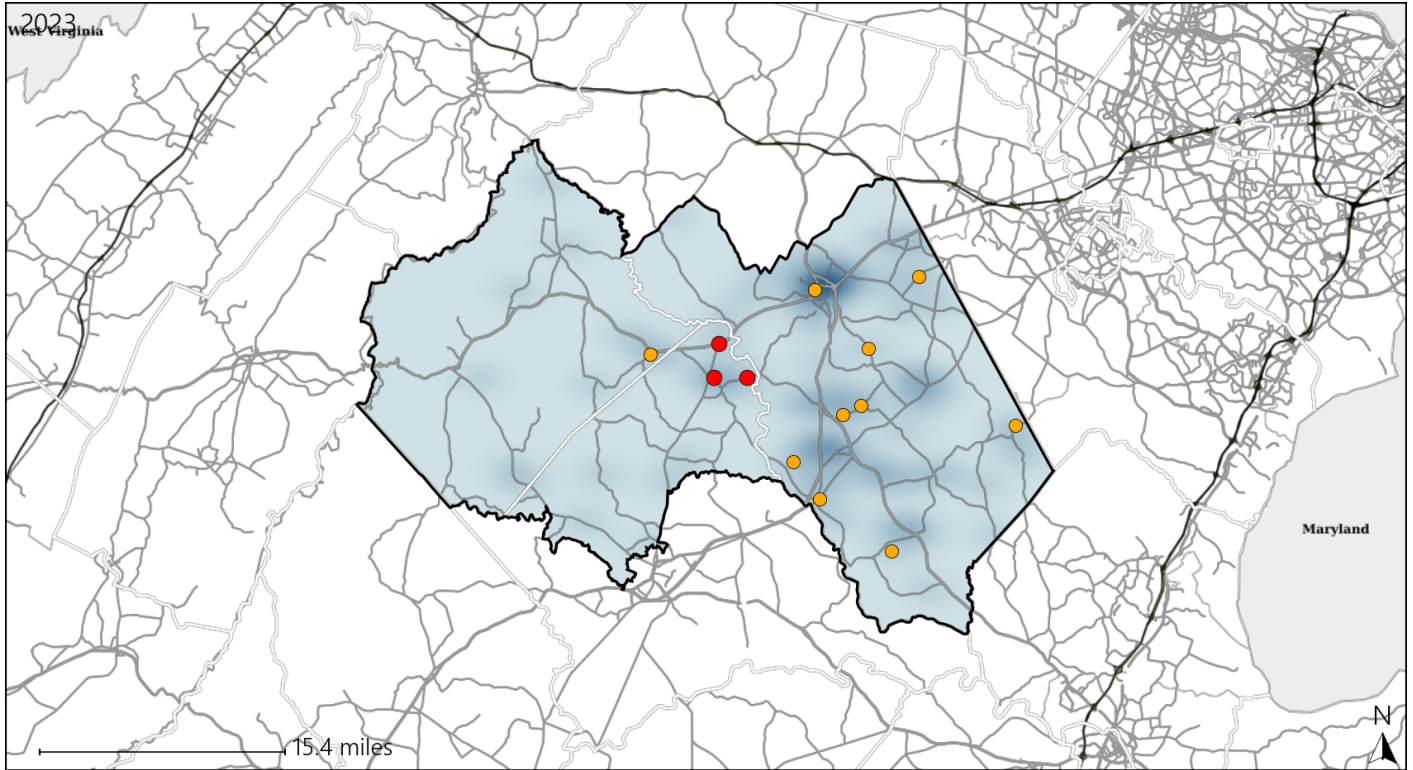


Available Crash Data - Calendar Year (CY)	CY 2020	CY 2021	CY 2022	CY 2023
Total Crashes	1277	1377	1388	1397
Fatal Crashes	10	10	11	12
Injury Crashes	448	445	448	494

# Virginia House District 61 Alcohol Crash Statistics

Report Generated May, 2024

	Count	Highest Time Period(s)	Highest Day(s)	Highest Month(s)
<b>Fatal Crashes</b>	<b>3</b>	<b>6:00pm - 8:59pm</b>	<b>Friday • Saturday</b>	<b>April • October</b>
<b>Resulting Fatalities</b>	<b>3</b>	(67%)	(66%)	(66%)
<b>Serious Injury Crashes</b>	<b>10</b>	<b>Midnight - 2:59am</b>	<b>Sunday</b>	<b>April • January</b>
		(30%)	(40%)	(40%)



### House District 61 Alcohol-Related Crashes

Interstate Crashes                      Non-interstate Crashes  
 ● Fatal                                      ● Fatal  
 ● Serious Injury                          ● Serious Injury

The blue gradient represents the density of all alcohol-related crashes.

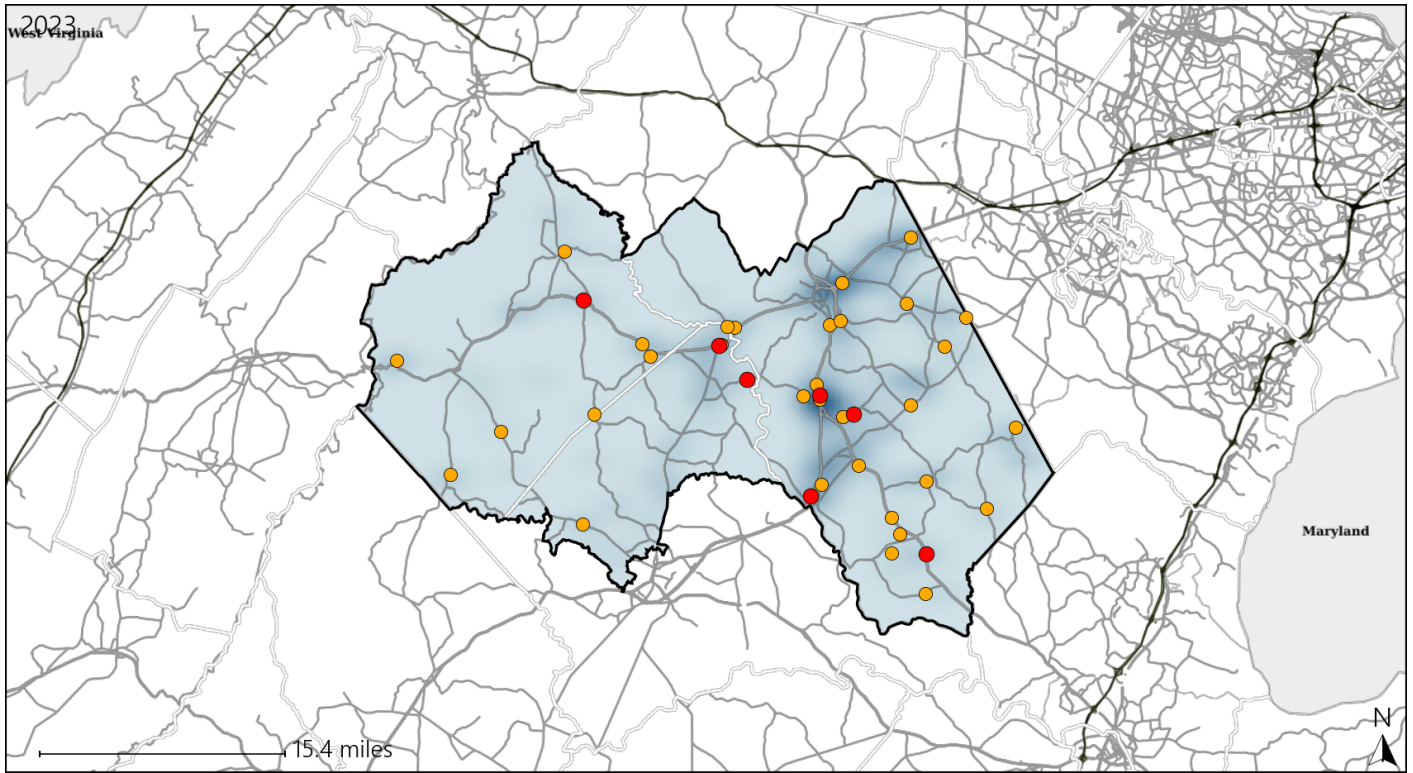


Available Crash Data - Calendar Year (CY)	CY 2020	CY 2021	CY 2022	CY 2023
Total Crashes	1277	1377	1388	1397
Fatal Crashes	10	10	11	12
Injury Crashes	448	445	448	494
Alcohol-Related Fatal Crashes	3	1	3	3
Percent of Alcohol-Related Fatal Crashes to Total Fatal Crashes	30%	10%	27%	25%
Alcohol-Related Injury Crashes	48	41	43	39
Percent of Alcohol-Related Injury Crashes to Total Injury Crashes	11%	9%	10%	8%

# Virginia House District 61 Speed Crash Statistics

Report Generated May, 2024

	Count	Highest Time Period(s)	Highest Day(s)	Highest Month(s)
<b>Fatal Crashes</b>	<b>7</b>	<b>6:00pm - 8:59pm</b>	<b>Wednesday</b>	<b>July • October</b>
<b>Resulting Fatalities</b>	<b>7</b>	<b>9:00pm - 11:59pm</b> (58%)	<b>(57%)</b>	<b>(58%)</b>
<b>Serious Injury Crashes</b>	<b>34</b>	<b>3:00pm - 5:59pm</b> <b>Noon - 2:59pm</b> (42%)	<b>Sunday</b> (26%)	<b>June • September</b> (30%)



### House District 61 Speed-Related Crashes

Interstate Crashes                      Non-interstate Crashes  
 ● Fatal                                      ● Fatal  
 ⊕ Serious Injury                          ⊕ Serious Injury

The blue gradient represents the density of all speed-related crashes.

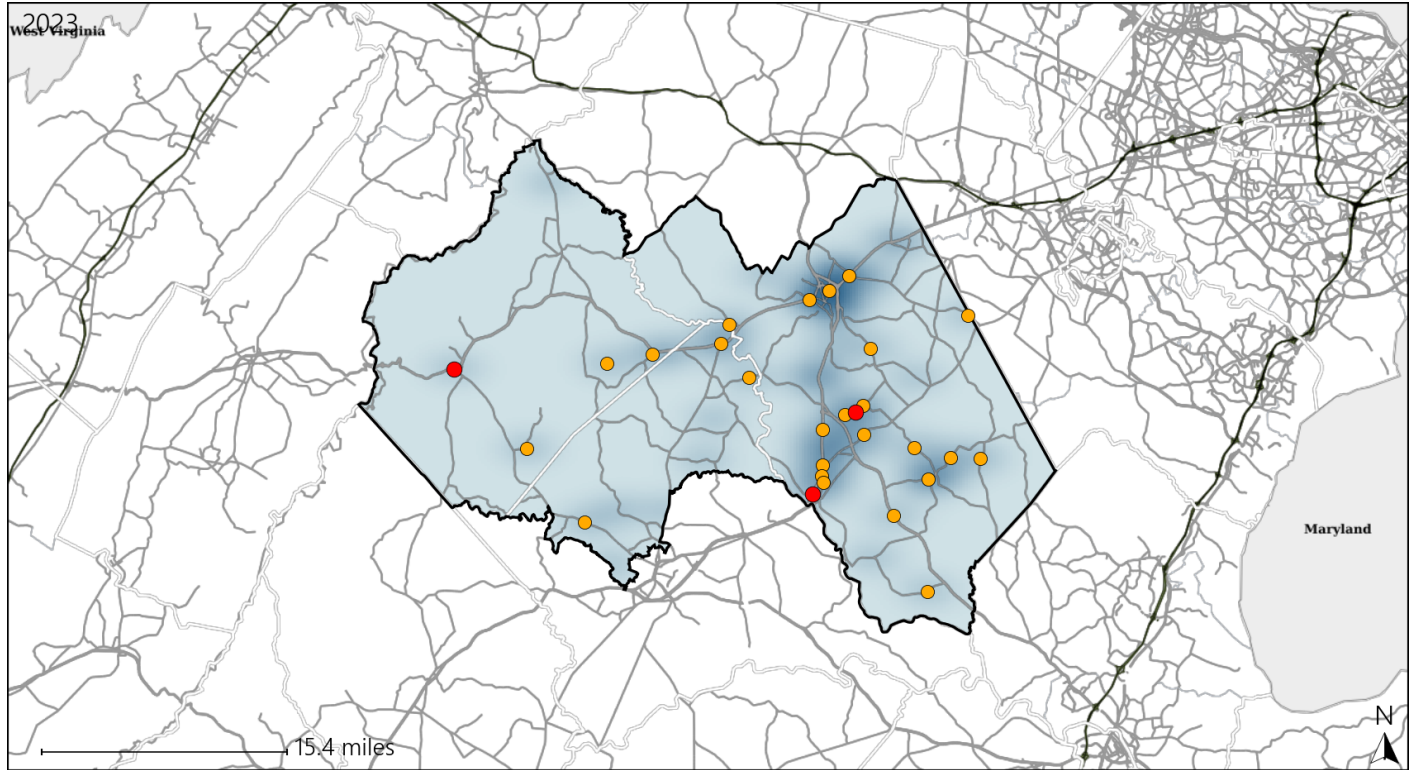


Available Crash Data - Calendar Year (CY)	CY 2020	CY 2021	CY 2022	CY 2023
Total Crashes	1277	1377	1388	1397
Fatal Crashes	10	10	11	12
Injury Crashes	448	445	448	494
Speed-Related Fatal Crashes	6	5	7	7
Percent of Speed-Related Fatal Crashes to Total Fatal Crashes	60%	50%	64%	58%
Speed-Related Injury Crashes	114	110	116	120
Percent of Speed-Related Injury Crashes to Total Injury Crashes	25%	25%	26%	24%

# Virginia House District 61 Unrestrained Crash Statistics

Report Generated May, 2024

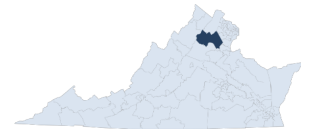
	Count	Highest Time Period(s)	Highest Day(s)	Highest Month(s)
<b>Fatal Crashes</b>	<b>3</b>	<b>9:00pm - 11:59pm</b>	<b>Monday</b>	<b>July • November</b>
<b>Unrestrained Fatalities</b>	<b>3</b>	(67%)	(67%)	(66%)
<b>Serious Injury Crashes</b>	<b>25</b>	<b>6:00pm - 8:59pm</b>	<b>Friday • Wednesday</b>	<b>June</b>
		(24%)	(40%)	(16%)



## House District 61 Unrestrained-Related Crashes

- |  |  |
|--|--|
| Interstate Crashes                                   | Non-interstate Crashes                               |
| <span style="color: red;">●</span> Fatal             | <span style="color: red;">●</span> Fatal             |
| <span style="color: orange;">●</span> Serious Injury | <span style="color: orange;">●</span> Serious Injury |

The blue gradient represents the density of all unrestrained-related crashes.

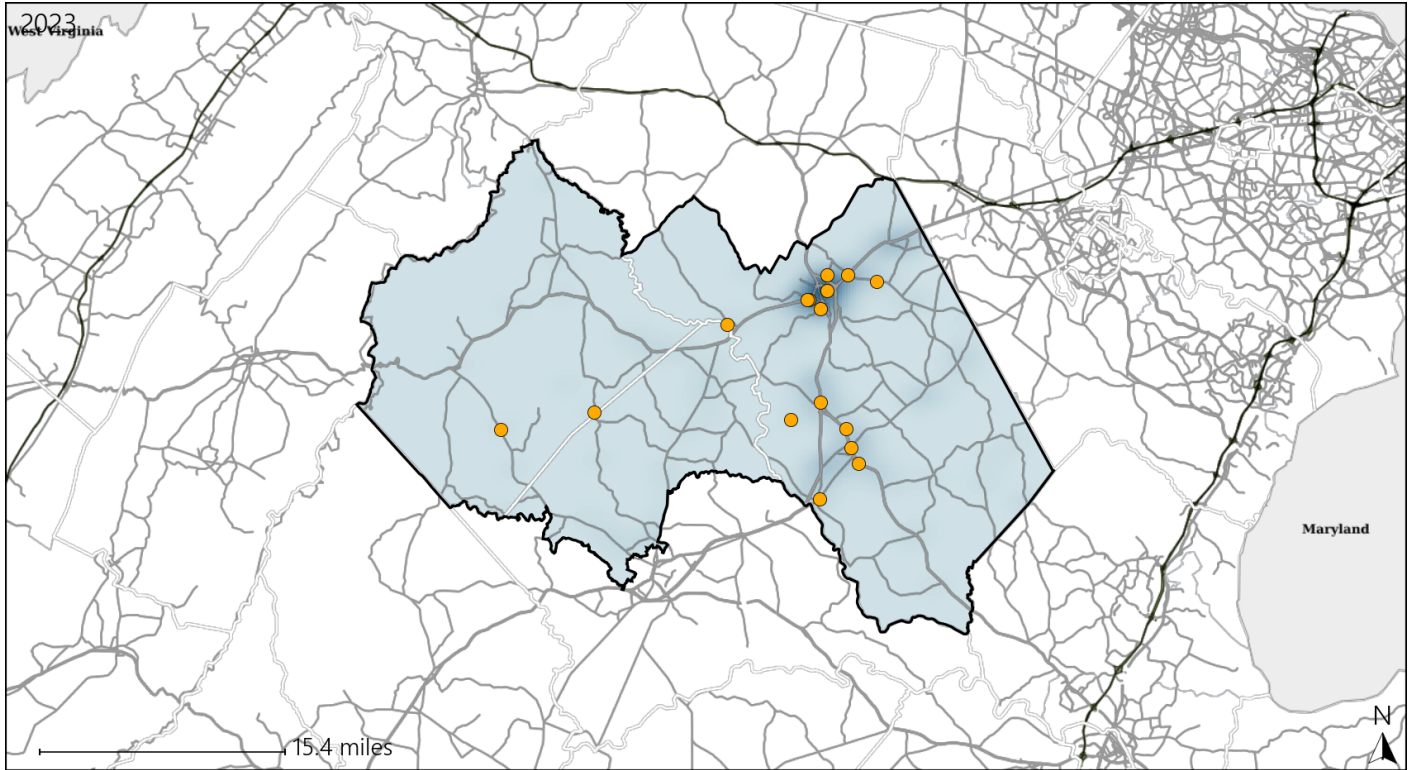


Available Crash Data - Calendar Year (CY)	CY 2020	CY 2021	CY 2022	CY 2023
<b>Total Crashes</b>	<b>1277</b>	<b>1377</b>	<b>1388</b>	<b>1397</b>
<b>Fatalities</b>	<b>12</b>	<b>10</b>	<b>13</b>	<b>12</b>
<b>Injuries</b>	<b>643</b>	<b>644</b>	<b>603</b>	<b>672</b>
<b>Unrestrained Fatalities</b>	<b>5</b>	<b>5</b>	<b>3</b>	<b>3</b>
<b>Percent of Unrestrained Fatalities to Total Fatalities</b>	<b>42%</b>	<b>50%</b>	<b>23%</b>	<b>25%</b>
<b>Unrestrained Injuries</b>	<b>61</b>	<b>44</b>	<b>51</b>	<b>58</b>
<b>Percent of Unrestrained Injuries to Total Injuries</b>	<b>9%</b>	<b>7%</b>	<b>8%</b>	<b>9%</b>

# Virginia House District 61 Distracted Driving Crash Statistics

Report Generated May, 2024

	Count	Highest Time Period(s)	Highest Day(s)	Highest Month(s)
<b>Fatal Crashes</b>	<b>0</b>	-	-	-
<b>Resulting Fatalities</b>	<b>0</b>	-	-	-
<b>Serious Injury Crashes</b>	<b>16</b>	Noon - 2:59pm (31%)	Friday - Sunday (38%)	September (19%)



## House District 61 Distracted Driving-Related Crashes

- |                    |                        |
|--------------------|------------------------|
| Interstate Crashes | Non-interstate Crashes |
| ● Fatal            | ● Fatal                |
| ● Serious Injury   | ● Serious Injury       |

The blue gradient represents the density of all distracted driving-related crashes.



Available Crash Data - Calendar Year (CY)	CY 2020	CY 2021	CY 2022	CY 2023
Total Crashes	1277	1377	1388	1397
Fatal Crashes	10	10	11	12
Injury Crashes	448	445	448	494
Distracted Driving-Related Fatal Crashes	0	1	1	0
Percent of Distracted Driving-Related Fatal Crashes to Total Fatal Crashes	0%	10%	9%	0%
Distracted Driving-Related Injury Crashes	68	81	85	80
Percent of Distracted Driving-Related Injury Crashes to Total Injury Crashes	15%	18%	19%	16%