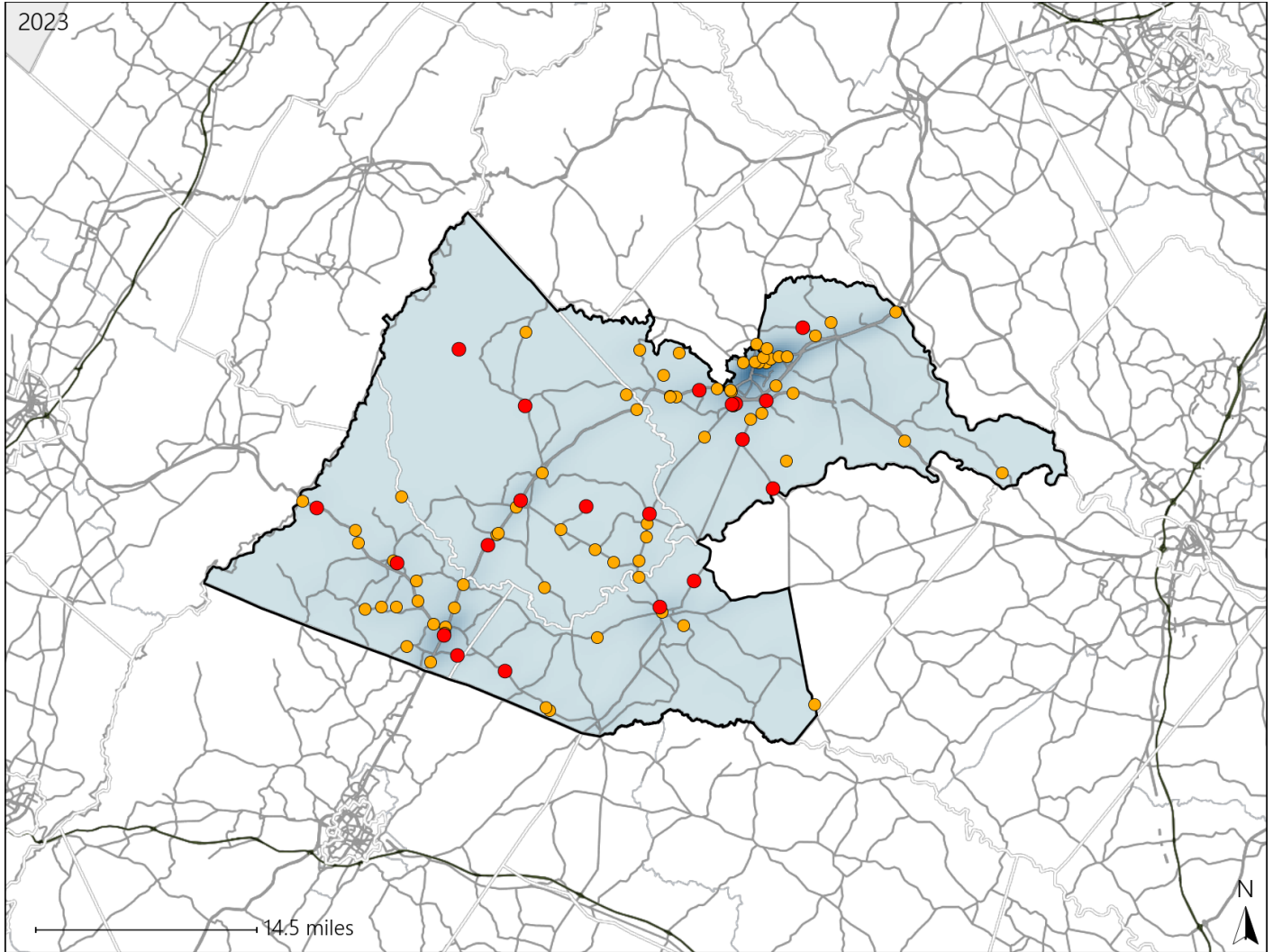


# Virginia House District 62 Crash Statistics

Report Generated May, 2024

	Count	Highest Time Period(s)	Highest Day(s)	Highest Month(s)
<b>Fatal Crashes</b>	<b>20</b>	<b>9:00am - 11:59am</b>	<b>Thursday</b>	<b>July</b>
<b>Resulting Fatalities</b>	<b>23</b>	(30%)	(25%)	(20%)
<b>Serious Injury Crashes</b>	<b>75</b>	<b>3:00pm - 5:59pm</b>	<b>Saturday</b>	<b>September</b>
		(29%)	(27%)	(15%)



### House District 62 Crashes

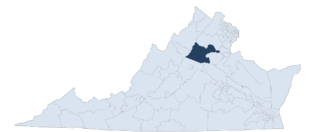
Interstate Crashes

- Fatal
- Serious Injury

Non-interstate Crashes

- Fatal
- Serious Injury

The blue gradient represents the density of all crashes.

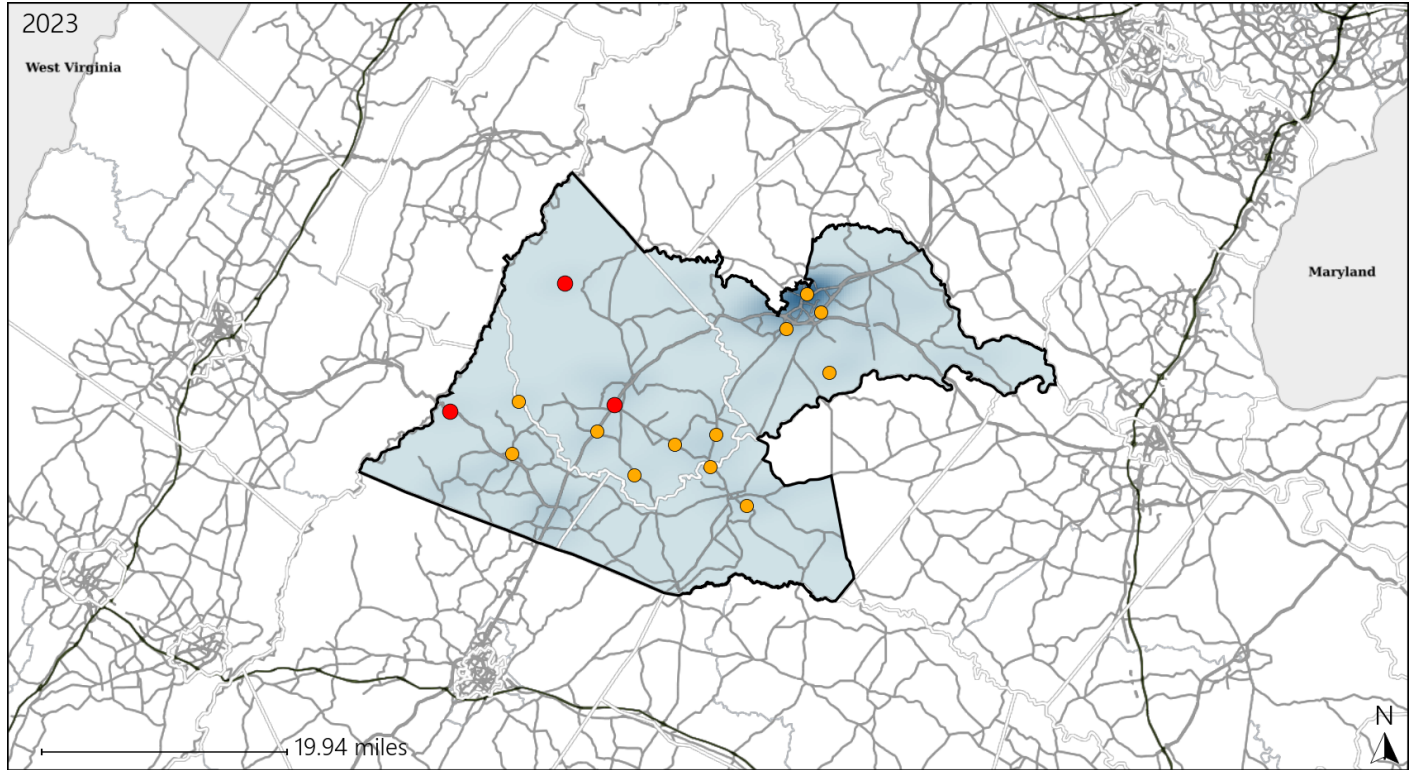


Available Crash Data - Calendar Year (CY)	CY 2020	CY 2021	CY 2022	CY 2023
Total Crashes	1210	1280	1392	1303
Fatal Crashes	15	8	9	20
Injury Crashes	453	498	565	563

# Virginia House District 62 Alcohol Crash Statistics

Report Generated May, 2024

	Count	Highest Time Period(s)	Highest Day(s)	Highest Month(s)
<b>Fatal Crashes</b>	<b>3</b>	<b>Midnight - 2:59am</b>	<b>Friday • Saturday</b>	<b>July • October</b>
<b>Resulting Fatalities</b>	<b>3</b>	(67%)	(66%)	(66%)
<b>Serious Injury Crashes</b>	<b>12</b>	<b>6:00pm - 8:59pm</b>	<b>Saturday</b>	<b>September</b>
		(33%)	(50%)	(25%)




## House District 62 Alcohol-Related Crashes


Interstate Crashes

Non-interstate Crashes

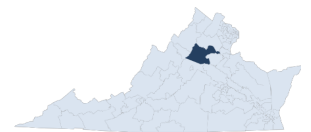
 Fatal

 Fatal

 Serious Injury

 Serious Injury

The blue gradient represents the density of all alcohol-related crashes.

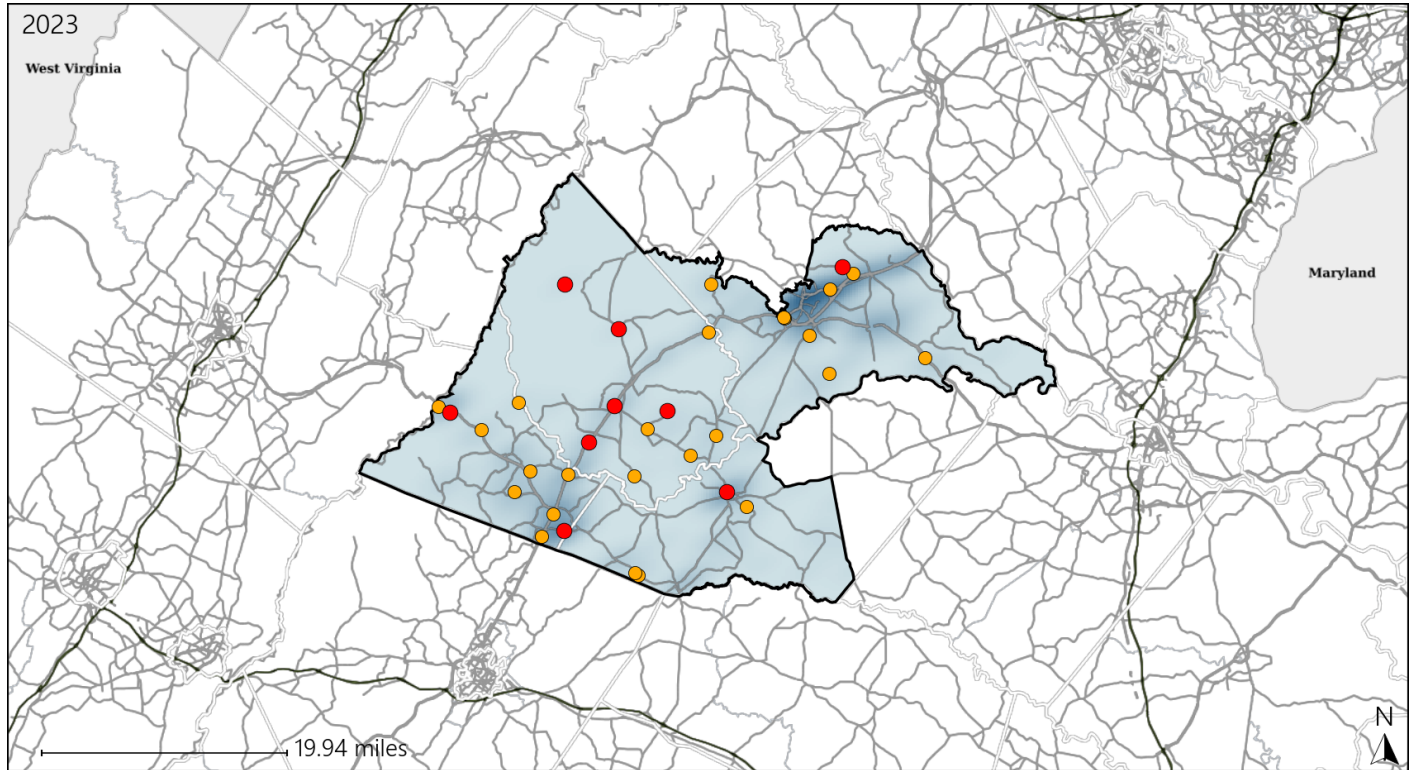


Available Crash Data - Calendar Year (CY)	CY 2020	CY 2021	CY 2022	CY 2023
Total Crashes	1210	1280	1392	1303
Fatal Crashes	15	8	9	20
Injury Crashes	453	498	565	563
Alcohol-Related Fatal Crashes	5	3	6	3
Percent of Alcohol-Related Fatal Crashes to Total Fatal Crashes	33%	38%	67%	15%
Alcohol-Related Injury Crashes	49	35	40	49
Percent of Alcohol-Related Injury Crashes to Total Injury Crashes	11%	7%	7%	9%

# Virginia House District 62 Speed Crash Statistics

Report Generated May, 2024

	Count	Highest Time Period(s)	Highest Day(s)	Highest Month(s)
<b>Fatal Crashes</b>	<b>9</b>	<b>6:00am - 8:59am</b>	<b>Sunday • Thursday</b>	<b>January • May</b>
<b>Resulting Fatalities</b>	<b>10</b>	<b>9:00am - 11:59am</b> (44%)	<b>(66%)</b>	<b>(44%)</b>
<b>Serious Injury Crashes</b>	<b>24</b>	<b>6:00pm - 8:59pm</b> (29%)	<b>Saturday</b> (38%)	<b>September</b> (21%)



## House District 62 Speed-Related Crashes

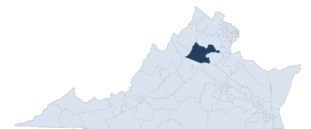
Interstate Crashes

Non-interstate Crashes

- Fatal
- Serious Injury

- Fatal
- Serious Injury

The blue gradient represents the density of all speed-related crashes.



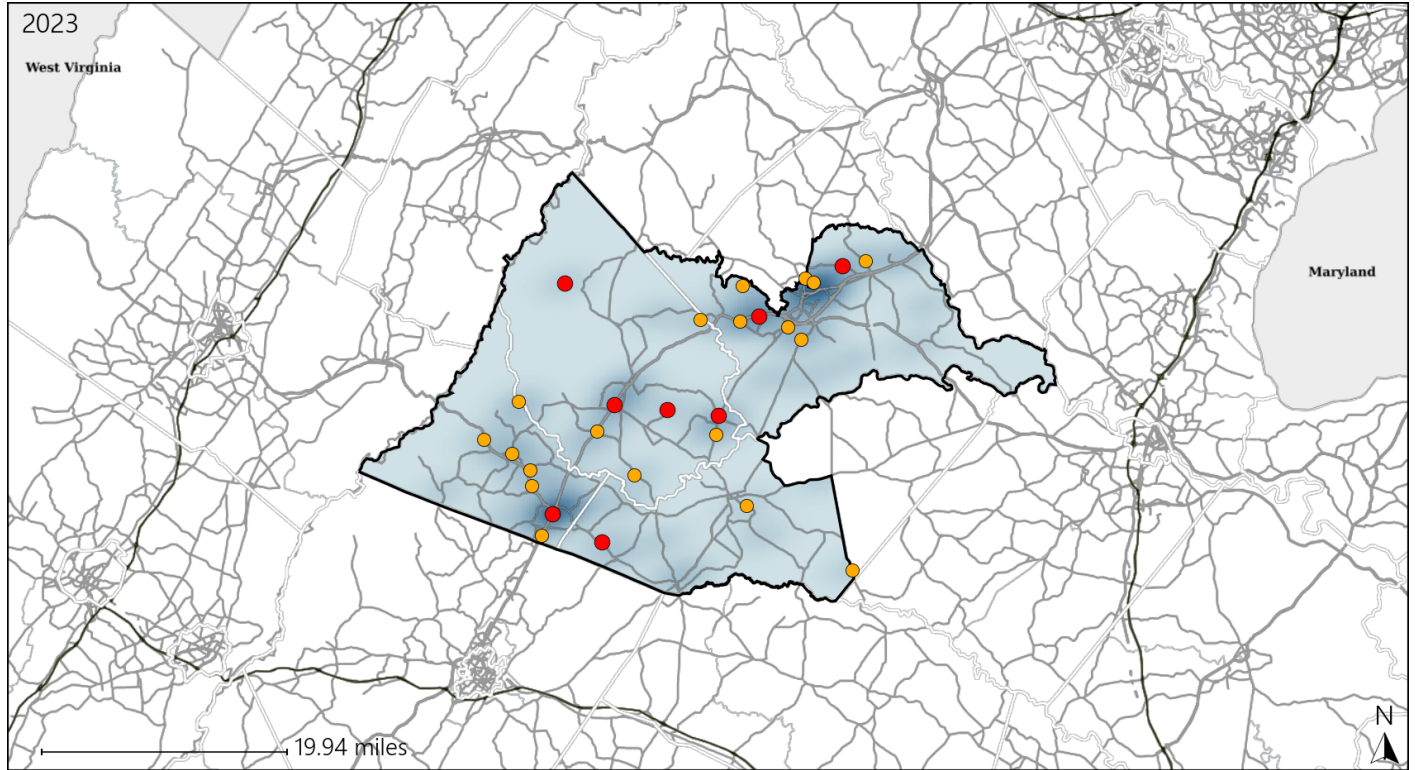
Available Crash Data - Calendar Year (CY)	CY 2020	CY 2021	CY 2022	CY 2023
Total Crashes	1210	1280	1392	1303
Fatal Crashes	15	8	9	20
Injury Crashes	453	498	565	563
Speed-Related Fatal Crashes	5	3	4	9
Percent of Speed-Related Fatal Crashes to Total Fatal Crashes	33%	38%	44%	45%
Speed-Related Injury Crashes	121	119	138	125
Percent of Speed-Related Injury Crashes to Total Injury Crashes	27%	24%	24%	22%



# Virginia House District 62 Unrestrained Crash Statistics

Report Generated May, 2024

	Count	Highest Time Period(s)	Highest Day(s)	Highest Month(s)
<b>Fatal Crashes</b>	<b>8</b>	<b>9:00am - 11:59am</b>	<b>Thursday</b>	<b>August • July</b>
<b>Unrestrained Fatalities</b>	<b>9</b>	<b>(38%)</b>	<b>(38%)</b>	<b>(50%)</b>
<b>Serious Injury Crashes</b>	<b>20</b>	<b>6:00pm - 8:59pm</b>	<b>Saturday</b>	<b>December</b>
		<b>(30%)</b>	<b>(30%)</b>	<b>(20%)</b>



## House District 62 Unrestrained-Related Crashes

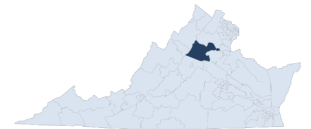
Interstate Crashes

- Fatal
- Serious Injury

Non-interstate Crashes

- Fatal
- Serious Injury

The blue gradient represents the density of all unrestrained-related crashes.

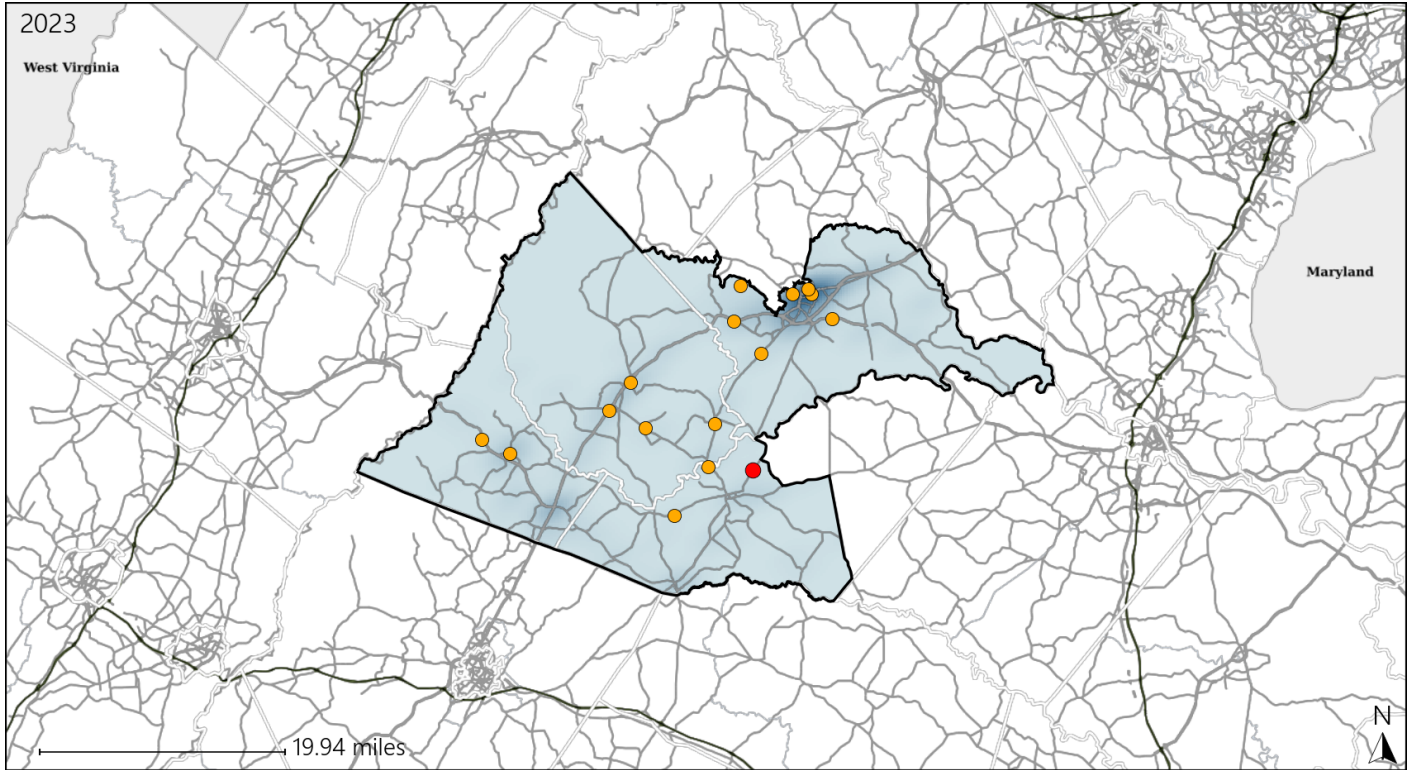


Available Crash Data - Calendar Year (CY)	CY 2020	CY 2021	CY 2022	CY 2023
<b>Total Crashes</b>	<b>1210</b>	<b>1280</b>	<b>1392</b>	<b>1303</b>
<b>Fatalities</b>	<b>17</b>	<b>9</b>	<b>9</b>	<b>23</b>
<b>Injuries</b>	<b>687</b>	<b>807</b>	<b>928</b>	<b>941</b>
<b>Unrestrained Fatalities</b>	<b>10</b>	<b>2</b>	<b>4</b>	<b>9</b>
<b>Percent of Unrestrained Fatalities to Total Fatalities</b>	<b>59%</b>	<b>22%</b>	<b>44%</b>	<b>39%</b>
<b>Unrestrained Injuries</b>	<b>79</b>	<b>52</b>	<b>68</b>	<b>69</b>
<b>Percent of Unrestrained Injuries to Total Injuries</b>	<b>11%</b>	<b>6%</b>	<b>7%</b>	<b>7%</b>

# Virginia House District 62 Distracted Driving Crash Statistics

Report Generated May, 2024

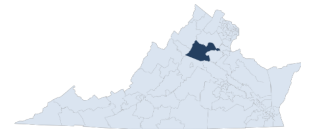
	Count	Highest Time Period(s)	Highest Day(s)	Highest Month(s)
<b>Fatal Crashes</b>	<b>1</b>	<b>Noon - 2:59pm</b>	<b>Saturday</b>	<b>September</b>
<b>Resulting Fatalities</b>	<b>1</b>	(100%)	(100%)	(100%)
<b>Serious Injury Crashes</b>	<b>15</b>	<b>3:00pm - 5:59pm</b>	<b>Thursday</b>	<b>January</b>
		(47%)	(33%)	(20%)



## House District 62 Distracted Driving-Related Crashes

- |                    |                        |
|--------------------|------------------------|
| Interstate Crashes | Non-interstate Crashes |
| Fatal              | Fatal                  |
| Serious Injury     | Serious Injury         |

The blue gradient represents the density of all distracted driving-related crashes.



Available Crash Data - Calendar Year (CY)	CY 2020	CY 2021	CY 2022	CY 2023
Total Crashes	1210	1280	1392	1303
Fatal Crashes	15	8	9	20
Injury Crashes	453	498	565	563
Distracted Driving-Related Fatal Crashes	4	1	0	1
Percent of Distracted Driving-Related Fatal Crashes to Total Fatal Crashes	27%	13%	0%	5%
Distracted Driving-Related Injury Crashes	69	70	93	94
Percent of Distracted Driving-Related Injury Crashes to Total Injury Crashes	15%	14%	16%	17%