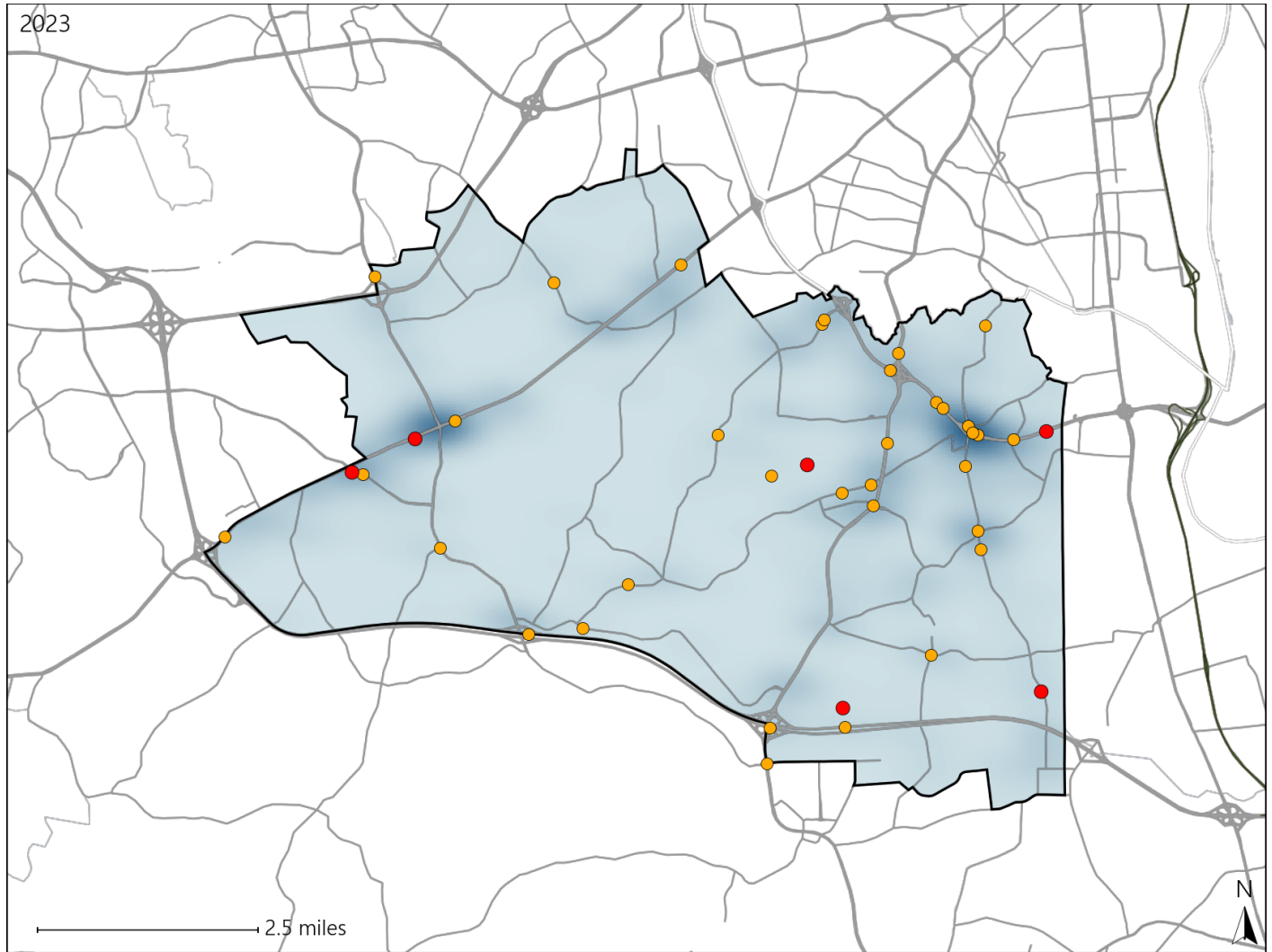


# Virginia House District 76 Crash Statistics

Report Generated May, 2024

	Count	Highest Time Period(s)	Highest Day(s)	Highest Month(s)
<b>Fatal Crashes</b>	<b>6</b>	<b>6:00pm - 8:59pm</b>	<b>Wednesday</b>	<b>December • January</b>
<b>Resulting Fatalities</b>	<b>6</b>	(33%)	(33%)	(34%)
<b>Serious Injury Crashes</b>	<b>34</b>	<b>9:00pm - 11:59pm</b>	<b>Saturday</b>	<b>February • September</b>
		(18%)	(26%)	(36%)



### House District 76 Crashes

Interstate Crashes

- Fatal
- Serious Injury

Non-interstate Crashes

- Fatal
- Serious Injury

The blue gradient represents the density of all crashes.

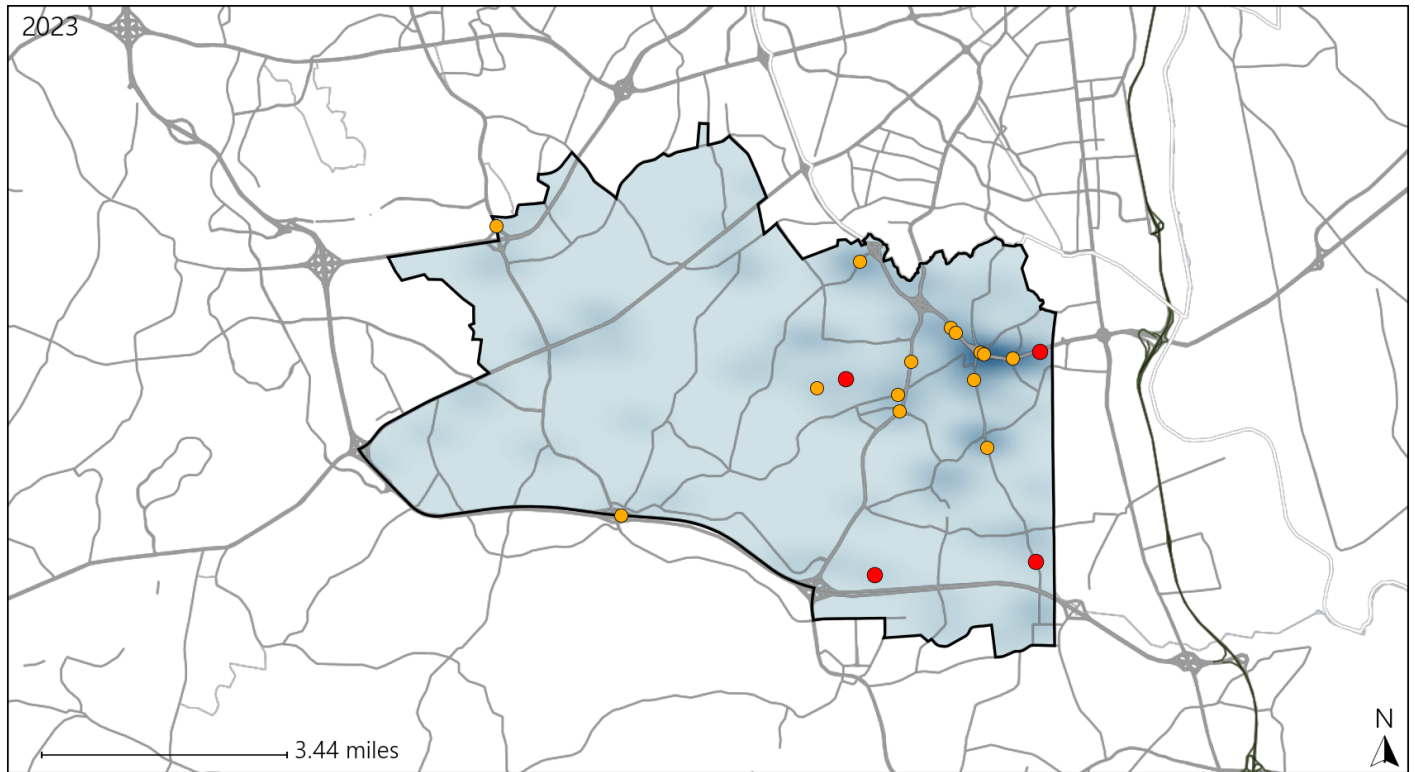


Available Crash Data - Calendar Year (CY)	CY 2020	CY 2021	CY 2022	CY 2023
Total Crashes	838	903	1000	1087
Fatal Crashes	7	6	7	6
Injury Crashes	200	224	230	256

# Virginia House District 76 Alcohol Crash Statistics

Report Generated May, 2024

	Count	Highest Time Period(s)	Highest Day(s)	Highest Month(s)
<b>Fatal Crashes</b>	<b>4</b>	<b>6:00pm - 8:59pm</b>	<b>Monday • Saturday</b>	<b>December • January</b>
<b>Resulting Fatalities</b>	<b>4</b>	(50%)	(50%)	(50%)
<b>Serious Injury Crashes</b>	<b>14</b>	<b>6:00pm - 8:59pm 9:00pm - 11:59pm</b>	<b>Saturday</b>	<b>February</b>
		(42%)	(43%)	(21%)



## House District 76 Alcohol-Related Crashes

Interstate Crashes                      Non-interstate Crashes  
 ● Fatal                                      ● Fatal  
 ⊕ Serious Injury                          ⊕ Serious Injury

The blue gradient represents the density of all alcohol-related crashes.

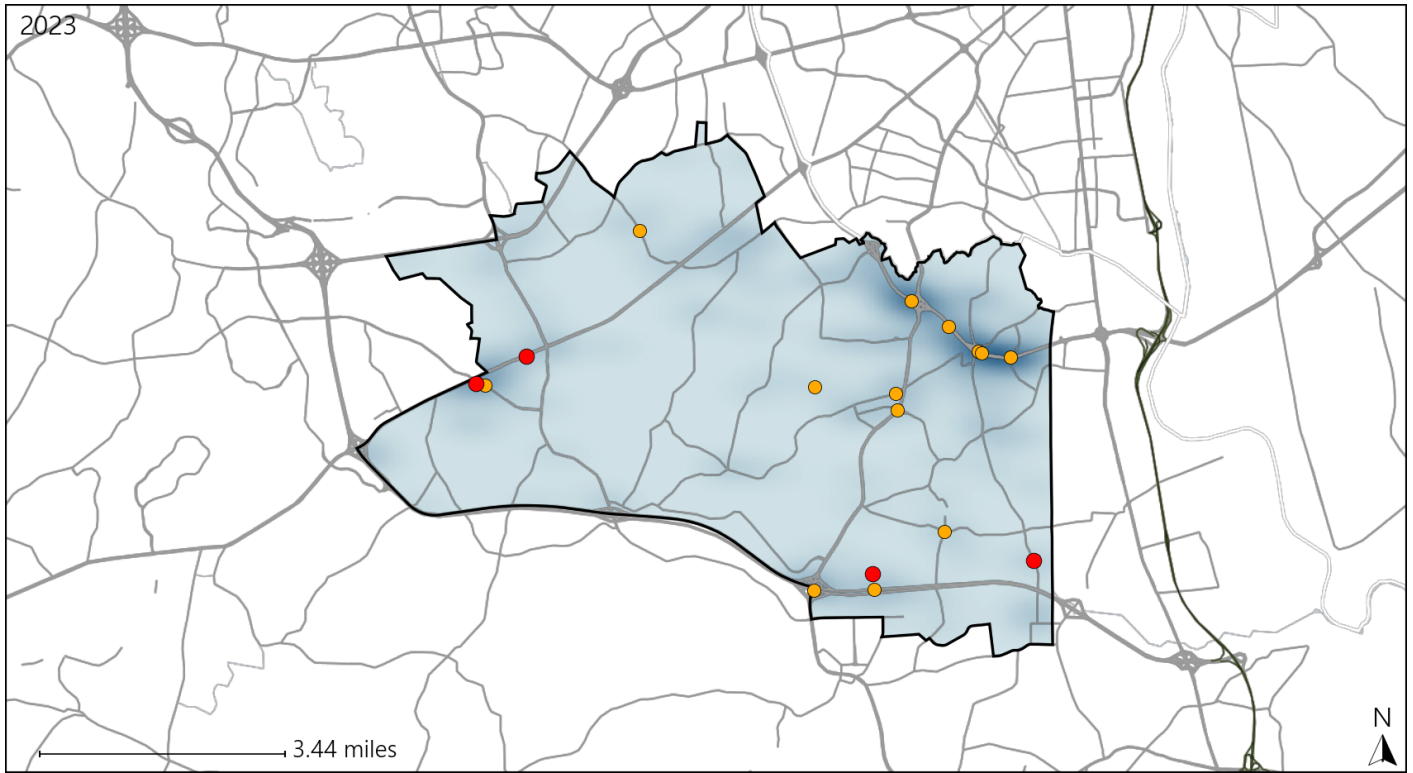


Available Crash Data - Calendar Year (CY)	CY 2020	CY 2021	CY 2022	CY 2023
Total Crashes	838	903	1000	1087
Fatal Crashes	7	6	7	6
Injury Crashes	200	224	230	256
Alcohol-Related Fatal Crashes	2	3	3	4
Percent of Alcohol-Related Fatal Crashes to Total Fatal Crashes	29%	50%	43%	67%
Alcohol-Related Injury Crashes	18	21	26	38
Percent of Alcohol-Related Injury Crashes to Total Injury Crashes	9%	9%	11%	15%

# Virginia House District 76 Speed Crash Statistics

Report Generated May, 2024

	Count	Highest Time Period(s)	Highest Day(s)	Highest Month(s)
<b>Fatal Crashes</b>	<b>4</b>	6:00pm - 8:59pm	Wednesday	January • June
<b>Resulting Fatalities</b>	<b>4</b>	9:00am - 11:59am (50%)	(50%)	(50%)
<b>Serious Injury Crashes</b>	<b>13</b>	6:00pm - 8:59pm	Saturday	February • September
		9:00am - 11:59am (46%)	(46%)	(46%)



### House District 76 Speed-Related Crashes

Interstate Crashes                      Non-interstate Crashes  
 ● Fatal                                      ● Fatal  
 ⊕ Serious Injury                          ⊕ Serious Injury

The blue gradient represents the density of all speed-related crashes.

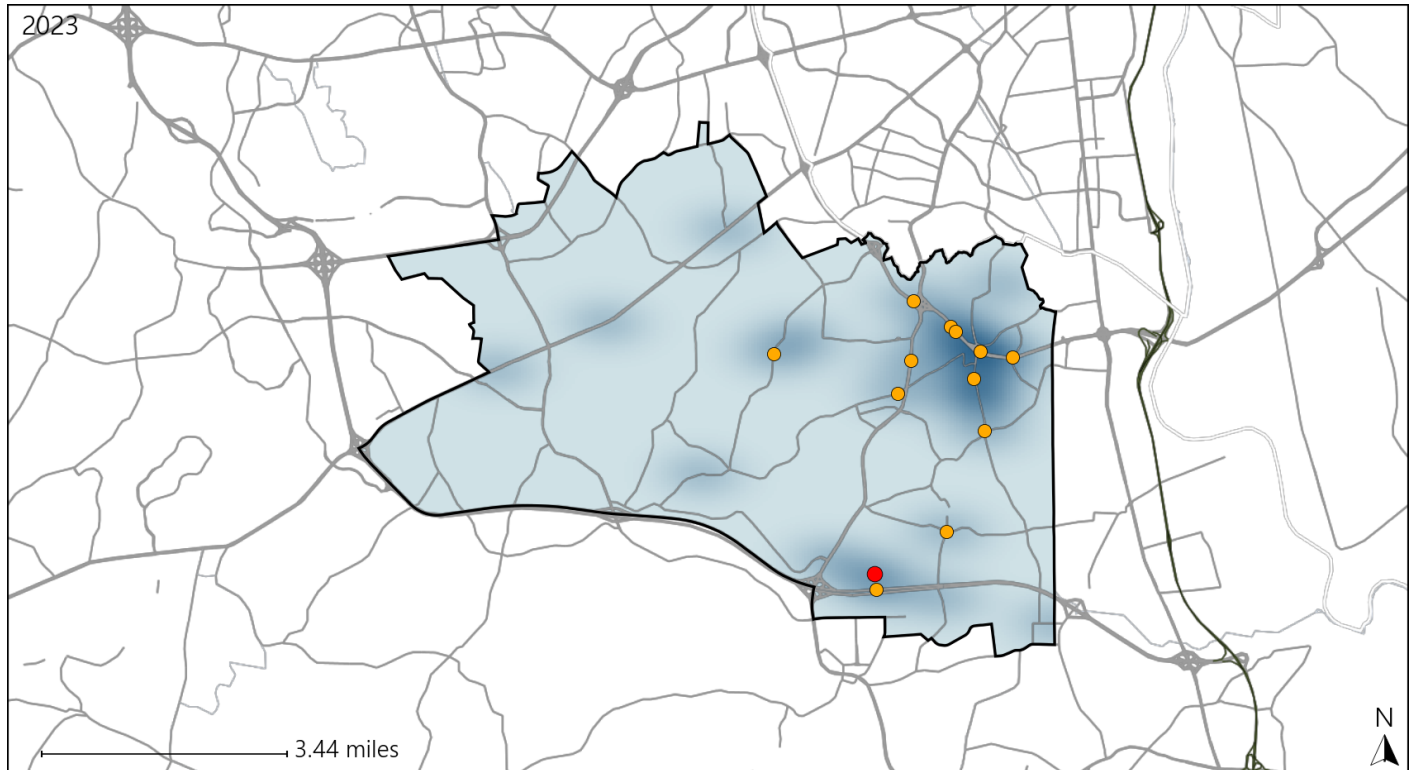


Available Crash Data - Calendar Year (CY)	CY 2020	CY 2021	CY 2022	CY 2023
Total Crashes	838	903	1000	1087
Fatal Crashes	7	6	7	6
Injury Crashes	200	224	230	256
Speed-Related Fatal Crashes	5	1	4	4
Percent of Speed-Related Fatal Crashes to Total Fatal Crashes	71%	17%	57%	67%
Speed-Related Injury Crashes	49	62	59	52
Percent of Speed-Related Injury Crashes to Total Injury Crashes	25%	28%	26%	20%

# Virginia House District 76 Unrestrained Crash Statistics

Report Generated May, 2024

	Count	Highest Time Period(s)	Highest Day(s)	Highest Month(s)
<b>Fatal Crashes</b>	<b>1</b>	<b>Midnight - 2:59am</b>	<b>Monday</b>	<b>January</b>
<b>Unrestrained Fatalities</b>	<b>1</b>	(100%)	(100%)	(100%)
<b>Serious Injury Crashes</b>	<b>12</b>	<b>Midnight - 2:59am</b>	<b>Saturday</b>	<b>September</b>
		(25%)	(33%)	(25%)



## House District 76 Unrestrained-Related Crashes

Interstate Crashes

Non-interstate Crashes

- Fatal
- Serious Injury

- Fatal
- Serious Injury

The blue gradient represents the density of all unrestrained-related crashes.

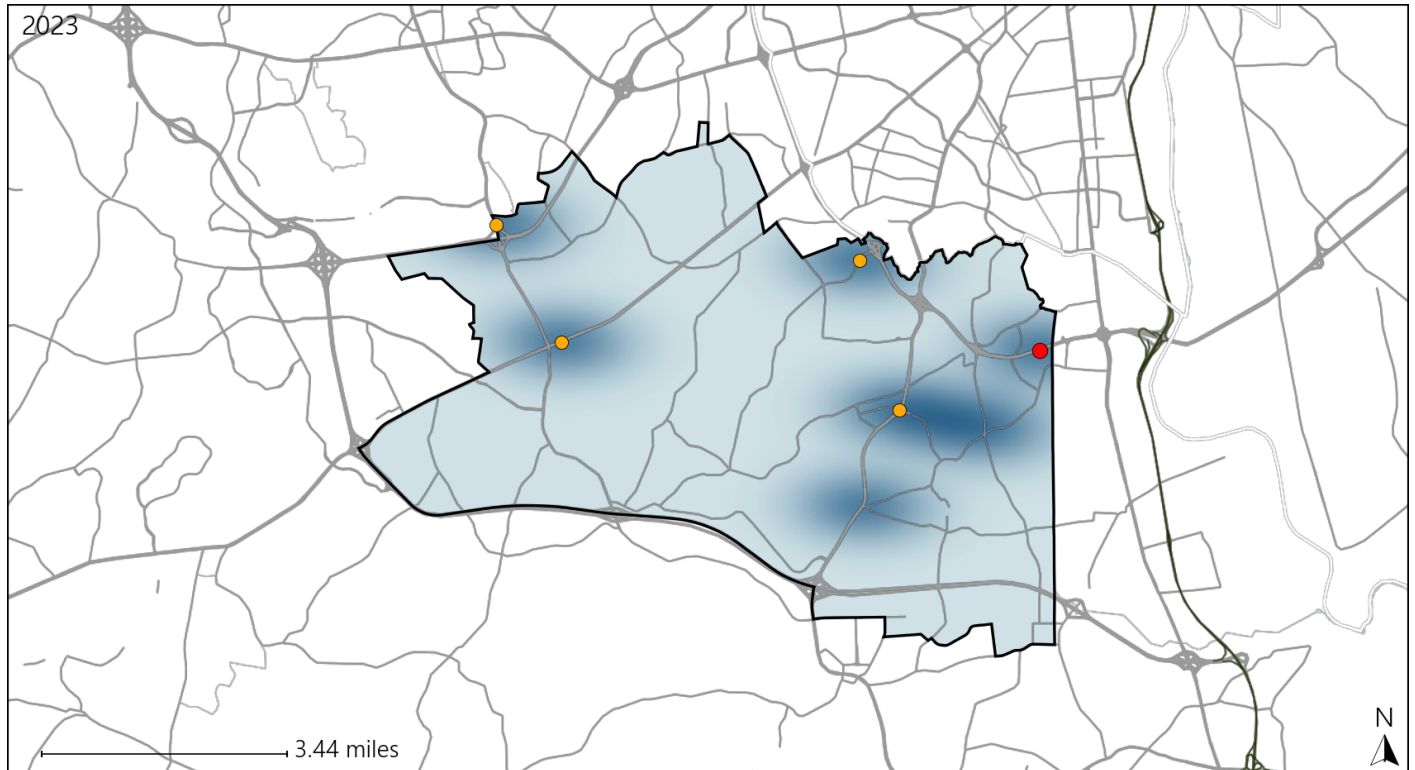


Available Crash Data - Calendar Year (CY)	CY 2020	CY 2021	CY 2022	CY 2023
<b>Total Crashes</b>	<b>838</b>	<b>903</b>	<b>1000</b>	<b>1087</b>
<b>Fatalities</b>	<b>7</b>	<b>6</b>	<b>7</b>	<b>6</b>
<b>Injuries</b>	<b>345</b>	<b>357</b>	<b>386</b>	<b>448</b>
<b>Unrestrained Fatalities</b>	<b>2</b>	<b>2</b>	<b>3</b>	<b>1</b>
<b>Percent of Unrestrained Fatalities to Total Fatalities</b>	<b>29%</b>	<b>33%</b>	<b>43%</b>	<b>17%</b>
<b>Unrestrained Injuries</b>	<b>31</b>	<b>40</b>	<b>28</b>	<b>27</b>
<b>Percent of Unrestrained Injuries to Total Injuries</b>	<b>9%</b>	<b>11%</b>	<b>7%</b>	<b>6%</b>

# Virginia House District 76 Pedestrian Crash Statistics

Report Generated May, 2024

	Count	Highest Time Period(s)	Highest Day(s)	Highest Month(s)
<b>Fatal Crashes</b>	<b>1</b>	<b>3:00am - 5:59am</b>	<b>Sunday</b>	<b>December</b>
<b>Pedestrian Fatalities</b>	<b>1</b>	<b>(100%)</b>	<b>(100%)</b>	<b>(100%)</b>
<b>Serious Injury Crashes</b>	<b>4</b>	<b>6:00pm - 8:59pm</b>	<b>Friday</b>	<b>February • January</b>
		<b>(75%)</b>	<b>(75%)</b>	<b>(100%)</b>



### House District 76 Pedestrian-Related Crashes

Interstate Crashes

Non-interstate Crashes

- Fatal
- Serious Injury

- Fatal
- Serious Injury

The blue gradient represents the density of all pedestrian-related crashes.

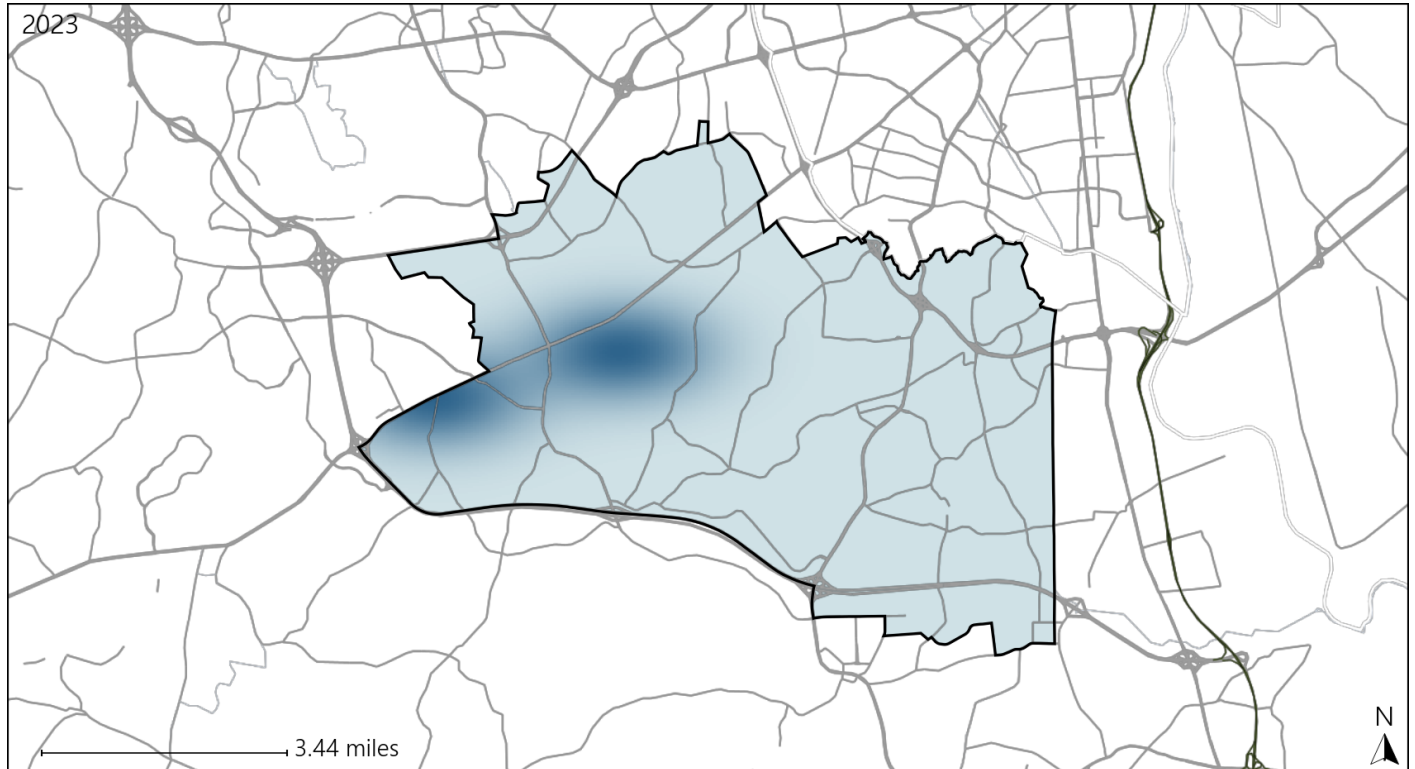


Available Crash Data - Calendar Year (CY)	CY 2020	CY 2021	CY 2022	CY 2023
Total Crashes	838	903	1000	1087
Fatal Crashes	7	6	7	6
Injury Crashes	200	224	230	256
Pedestrian-Related Fatal Crashes	2	1	1	1
Percent of Pedestrian-Related Fatal Crashes to Total Fatal Crashes	29%	17%	14%	17%
Pedestrian-Related Injury Crashes	4	8	10	6
Percent of Pedestrian-Related Injury Crashes to Total Injury Crashes	2%	4%	4%	2%

# Virginia House District 76 Bicycle Crash Statistics

Report Generated May, 2024

	Count	Highest Time Period(s)	Highest Day(s)	Highest Month(s)
<b>Fatal Crashes</b>	<b>0</b>	-	-	-
<b>Bicycle Fatalities</b>	<b>0</b>	-	-	-
<b>Serious Injury Crashes</b>	<b>0</b>	-	-	-



### House District 76 Bicycle-Related Crashes

Interstate Crashes                      Non-interstate Crashes  
 ● Fatal                                      ● Fatal  
 ⊕ Serious Injury                      ⊕ Serious Injury

The blue gradient represents the density of all bicycle-related crashes.

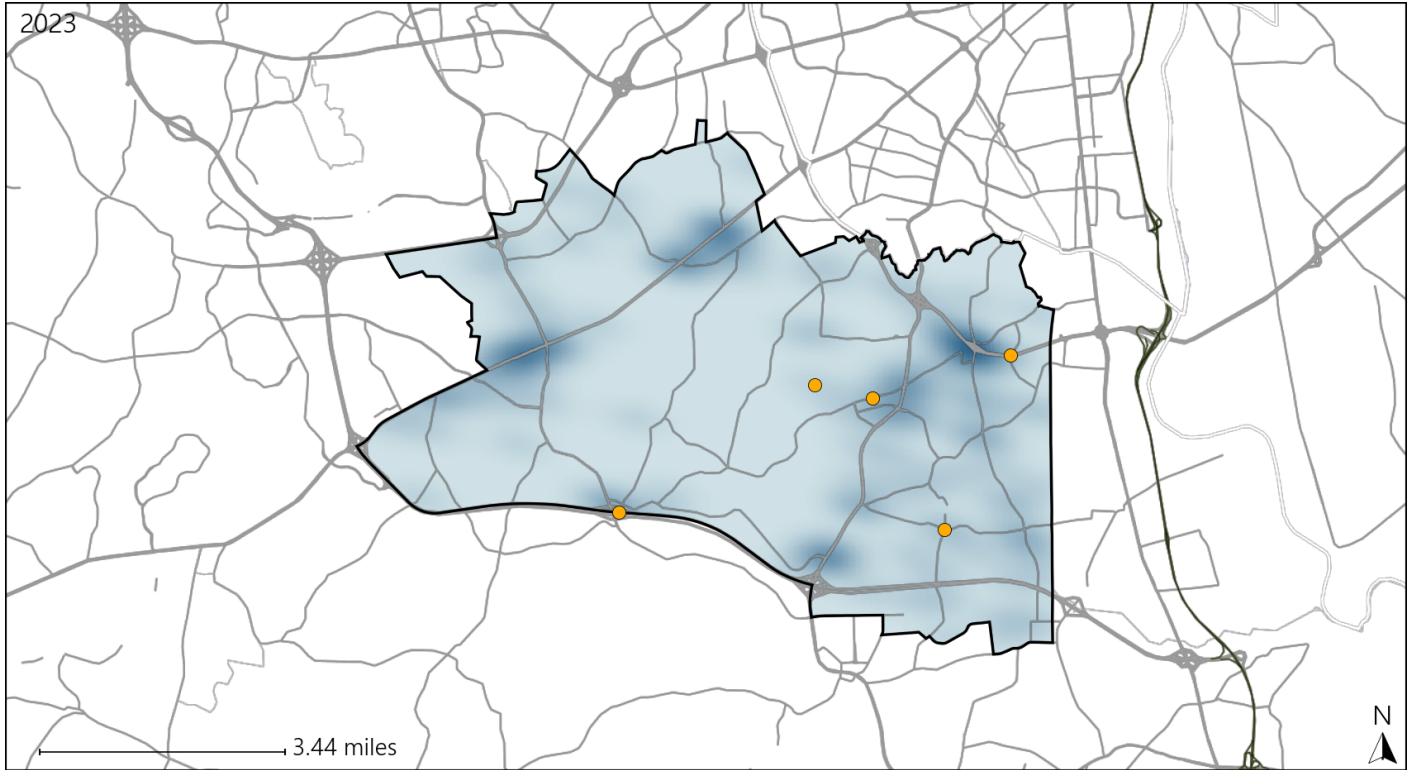


Available Crash Data - Calendar Year (CY)	CY 2020	CY 2021	CY 2022	CY 2023
Total Crashes	838	903	1000	1087
Fatal Crashes	7	6	7	6
Injury Crashes	200	224	230	256
Bicycle-Related Fatal Crashes	0	1	0	0
Percent of Bicycle-Related Fatal Crashes to Total Fatal Crashes	0%	17%	0%	0%
Bicycle-Related Injury Crashes	0	2	1	2
Percent of Bicycle-Related Injury Crashes to Total Injury Crashes	0%	1%	0%	1%

# Virginia House District 76 Distracted Driving Crash Statistics

Report Generated May, 2024

	Count	Highest Time Period(s)	Highest Day(s)	Highest Month(s)
<b>Fatal Crashes</b>	0	-	-	-
<b>Resulting Fatalities</b>	0	-	-	-
<b>Serious Injury Crashes</b>	5	9:00pm - 11:59pm (40%)	Saturday (40%)	September (40%)



## House District 76 Distracted Driving-Related Crashes

- |                    |                        |
|--------------------|------------------------|
| Interstate Crashes | Non-interstate Crashes |
| ● Fatal            | ● Fatal                |
| ● Serious Injury   | ● Serious Injury       |

The blue gradient represents the density of all distracted driving-related crashes.



Available Crash Data - Calendar Year (CY)	CY 2020	CY 2021	CY 2022	CY 2023
Total Crashes	838	903	1000	1087
Fatal Crashes	7	6	7	6
Injury Crashes	200	224	230	256
Distracted Driving-Related Fatal Crashes	3	0	1	0
Percent of Distracted Driving-Related Fatal Crashes to Total Fatal Crashes	43%	0%	14%	0%
Distracted Driving-Related Injury Crashes	30	37	35	36
Percent of Distracted Driving-Related Injury Crashes to Total Injury Crashes	15%	17%	15%	14%