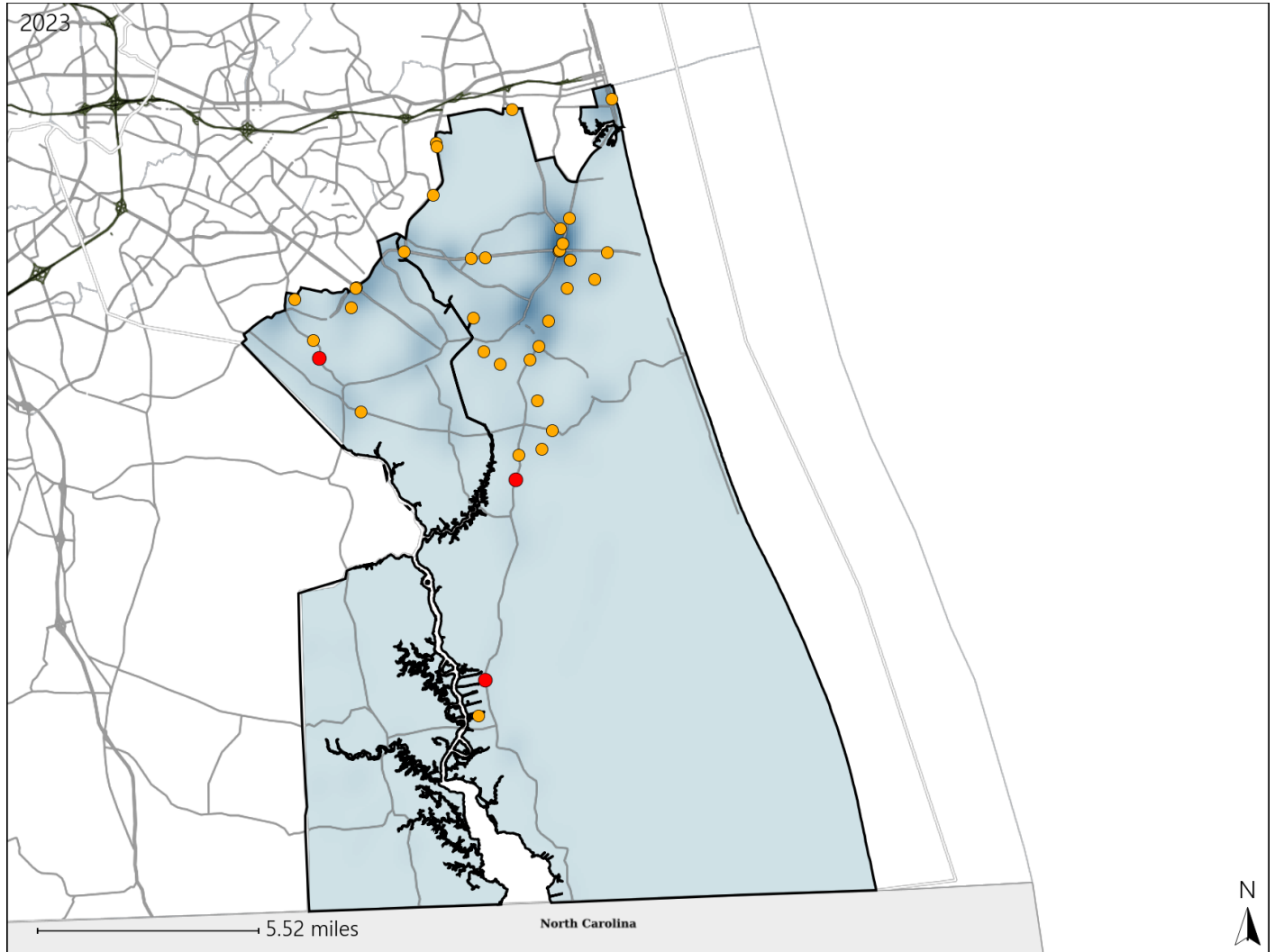


# Virginia House District 98 Crash Statistics

Report Generated May, 2024

	Count	Highest Time Period(s)	Highest Day(s)	Highest Month(s)
<b>Fatal Crashes</b>	<b>3</b>	3:00pm - 5:59pm	Saturday • Sunday	February • January
<b>Resulting Fatalities</b>	<b>3</b>	6:00pm - 8:59pm (66%)	(66%)	(66%)
<b>Serious Injury Crashes</b>	<b>35</b>	3:00pm - 5:59pm (34%)	Friday (31%)	April • December (28%)



## House District 98 Crashes

Interstate Crashes

- Fatal
- Serious Injury

Non-interstate Crashes

- Fatal
- Serious Injury

The blue gradient represents the density of all crashes.

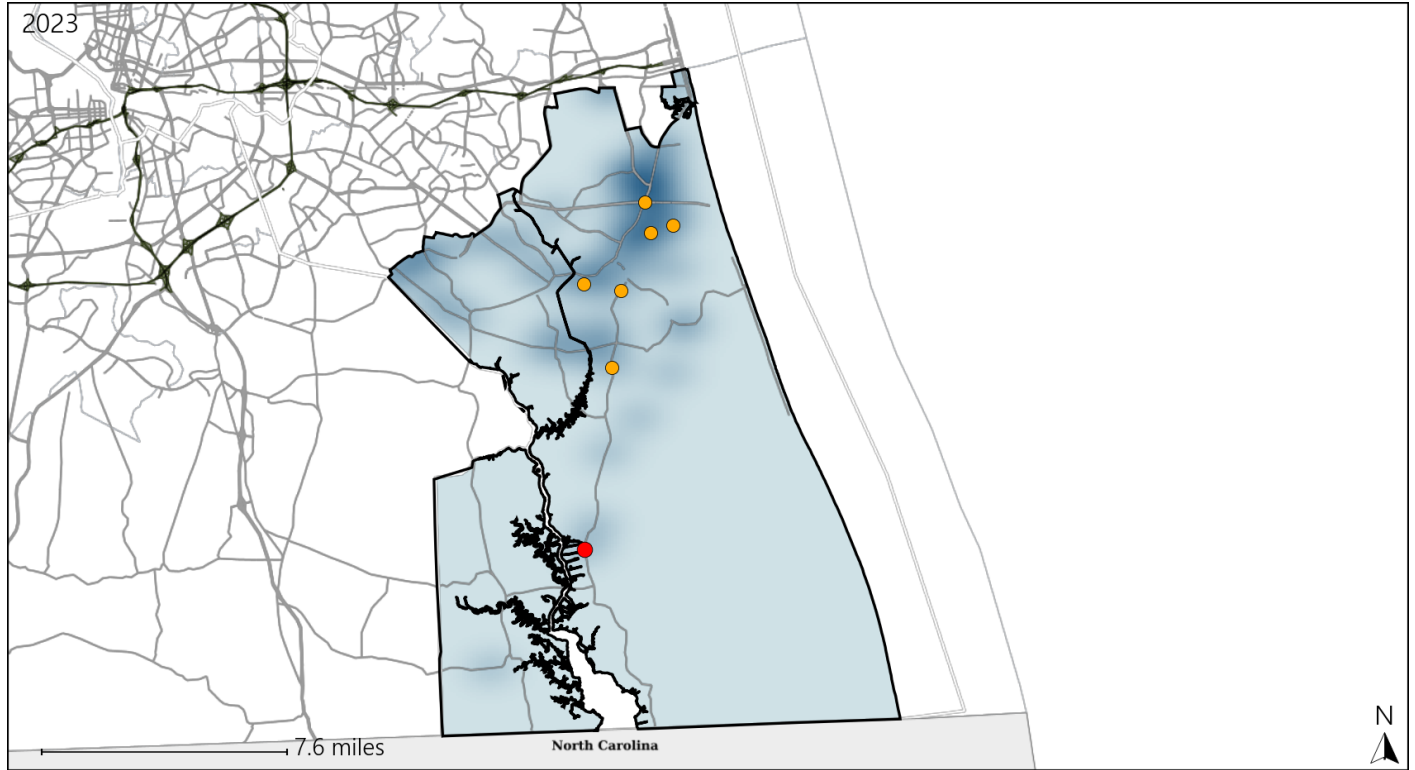


Available Crash Data - Calendar Year (CY)	CY 2020	CY 2021	CY 2022	CY 2023
Total Crashes	823	892	891	748
Fatal Crashes	6	8	8	3
Injury Crashes	238	252	267	216

# Virginia House District 98 Alcohol Crash Statistics

Report Generated May, 2024

	Count	Highest Time Period(s)	Highest Day(s)	Highest Month(s)
<b>Fatal Crashes</b>	<b>1</b>	<b>6:00pm - 8:59pm</b>	<b>Sunday</b>	<b>January</b>
<b>Resulting Fatalities</b>	<b>1</b>	(100%)	(100%)	(100%)
<b>Serious Injury Crashes</b>	<b>6</b>	<b>6:00pm - 8:59pm</b>	<b>Friday</b>	<b>April</b>
		(50%)	(67%)	(50%)



## House District 98 Alcohol-Related Crashes

Interstate Crashes

Non-interstate Crashes

- Fatal
- Serious Injury

- Fatal
- Serious Injury

The blue gradient represents the density of all alcohol-related crashes.

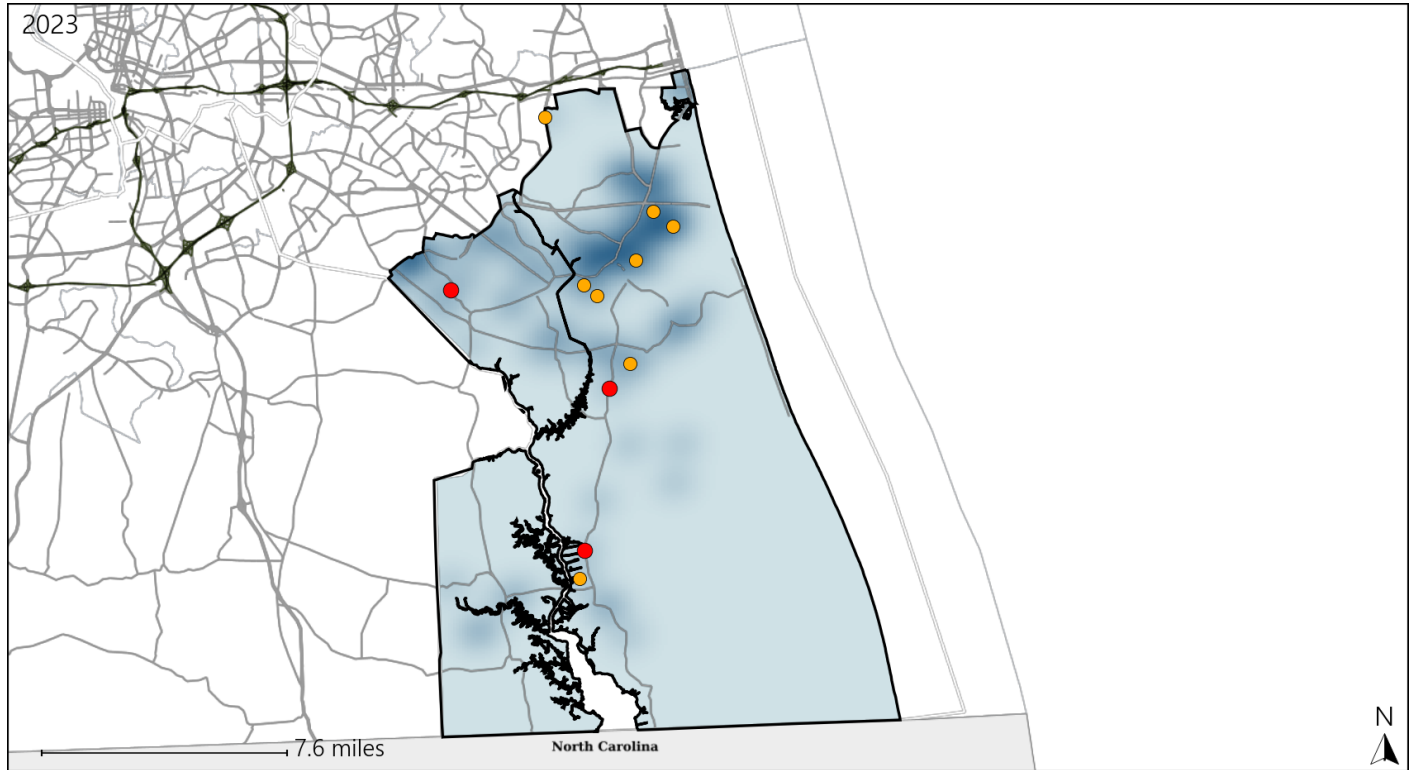


Available Crash Data - Calendar Year (CY)	CY 2020	CY 2021	CY 2022	CY 2023
<b>Total Crashes</b>	<b>823</b>	<b>892</b>	<b>891</b>	<b>748</b>
<b>Fatal Crashes</b>	<b>6</b>	<b>8</b>	<b>8</b>	<b>3</b>
<b>Injury Crashes</b>	<b>238</b>	<b>252</b>	<b>267</b>	<b>216</b>
<b>Alcohol-Related Fatal Crashes</b>	<b>4</b>	<b>4</b>	<b>4</b>	<b>1</b>
<b>Percent of Alcohol-Related Fatal Crashes to Total Fatal Crashes</b>	<b>67%</b>	<b>50%</b>	<b>50%</b>	<b>33%</b>
<b>Alcohol-Related Injury Crashes</b>	<b>32</b>	<b>31</b>	<b>32</b>	<b>19</b>
<b>Percent of Alcohol-Related Injury Crashes to Total Injury Crashes</b>	<b>13%</b>	<b>12%</b>	<b>12%</b>	<b>9%</b>

# Virginia House District 98 Speed Crash Statistics

Report Generated May, 2024

	Count	Highest Time Period(s)	Highest Day(s)	Highest Month(s)
<b>Fatal Crashes</b>	<b>3</b>	3:00pm - 5:59pm	Saturday • Sunday	February • January
<b>Resulting Fatalities</b>	<b>3</b>	6:00pm - 8:59pm (66%)	(66%)	(66%)
<b>Serious Injury Crashes</b>	<b>8</b>	6:00pm - 8:59pm (38%)	Friday • Thursday (50%)	April • August (24%)



## House District 98 Speed-Related Crashes

Interstate Crashes

Non-interstate Crashes

- Fatal
- Serious Injury

- Fatal
- Serious Injury

The blue gradient represents the density of all speed-related crashes.

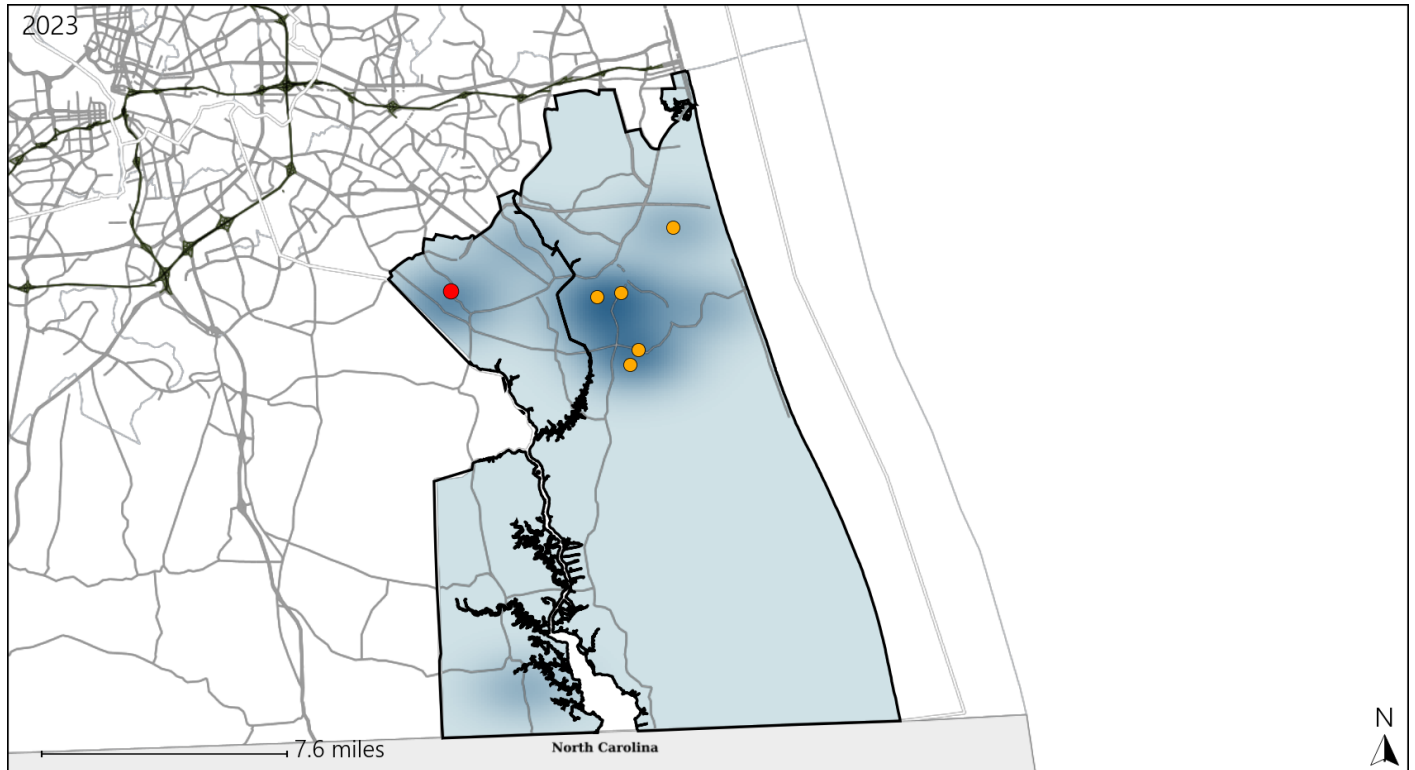


Available Crash Data - Calendar Year (CY)	CY 2020	CY 2021	CY 2022	CY 2023
Total Crashes	823	892	891	748
Fatal Crashes	6	8	8	3
Injury Crashes	238	252	267	216
Speed-Related Fatal Crashes	4	4	2	3
Percent of Speed-Related Fatal Crashes to Total Fatal Crashes	67%	50%	25%	100%
Speed-Related Injury Crashes	30	47	43	33
Percent of Speed-Related Injury Crashes to Total Injury Crashes	13%	19%	16%	15%

# Virginia House District 98 Unrestrained Crash Statistics

Report Generated May, 2024

	Count	Highest Time Period(s)	Highest Day(s)	Highest Month(s)
<b>Fatal Crashes</b>	<b>1</b>	<b>3:00pm - 5:59pm</b>	<b>Saturday</b>	<b>October</b>
<b>Unrestrained Fatalities</b>	<b>1</b>	<b>(100%)</b>	<b>(100%)</b>	<b>(100%)</b>
<b>Serious Injury Crashes</b>	<b>5</b>	<b>3:00pm - 5:59pm</b>	<b>Wednesday</b>	<b>August • December</b>
		<b>(40%)</b>	<b>(40%)</b>	<b>(40%)</b>



## House District 98 Unrestrained-Related Crashes

Interstate Crashes

- Fatal
- Serious Injury

Non-interstate Crashes

- Fatal
- Serious Injury

The blue gradient represents the density of all unrestrained-related crashes.

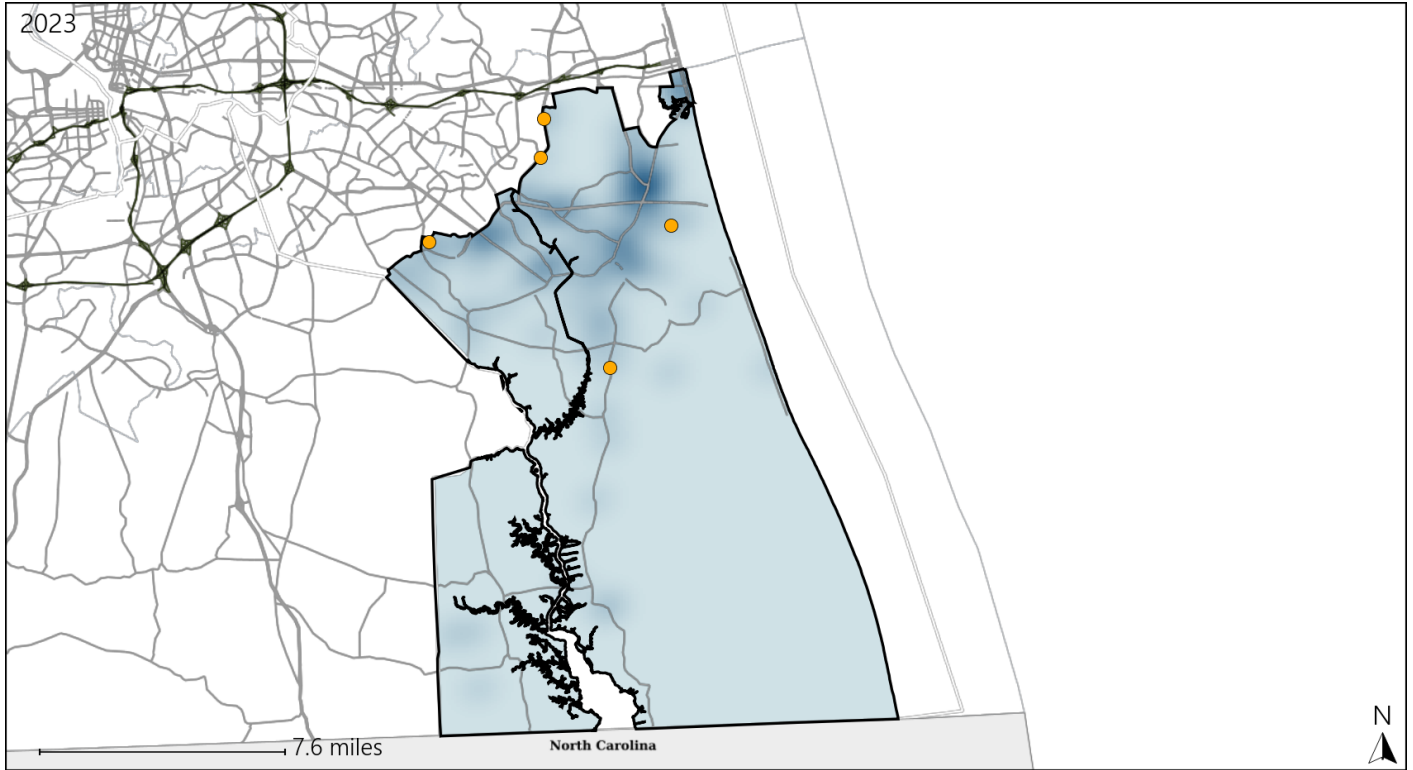


Available Crash Data - Calendar Year (CY)	CY 2020	CY 2021	CY 2022	CY 2023
<b>Total Crashes</b>	<b>823</b>	<b>892</b>	<b>891</b>	<b>748</b>
<b>Fatalities</b>	<b>6</b>	<b>8</b>	<b>8</b>	<b>3</b>
<b>Injuries</b>	<b>360</b>	<b>374</b>	<b>423</b>	<b>330</b>
<b>Unrestrained Fatalities</b>	<b>0</b>	<b>1</b>	<b>4</b>	<b>1</b>
<b>Percent of Unrestrained Fatalities to Total Fatalities</b>	<b>0%</b>	<b>13%</b>	<b>50%</b>	<b>33%</b>
<b>Unrestrained Injuries</b>	<b>17</b>	<b>14</b>	<b>15</b>	<b>11</b>
<b>Percent of Unrestrained Injuries to Total Injuries</b>	<b>5%</b>	<b>4%</b>	<b>4%</b>	<b>3%</b>

# Virginia House District 98 Distracted Driving Crash Statistics

Report Generated May, 2024

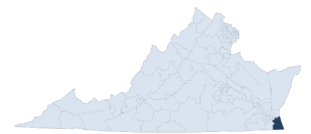
	Count	Highest Time Period(s)	Highest Day(s)	Highest Month(s)
<b>Fatal Crashes</b>	0	-	-	-
<b>Resulting Fatalities</b>	0	-	-	-
<b>Serious Injury Crashes</b>	5	3:00pm - 5:59pm (40%)	Wednesday (40%)	December (40%)



## House District 98 Distracted Driving-Related Crashes

- |  |  |
|--|--|
| Interstate Crashes                                   | Non-interstate Crashes                               |
| <span style="color: red;">●</span> Fatal             | <span style="color: red;">●</span> Fatal             |
| <span style="color: orange;">●</span> Serious Injury | <span style="color: orange;">●</span> Serious Injury |

The blue gradient represents the density of all distracted driving-related crashes.



Available Crash Data - Calendar Year (CY)	CY 2020	CY 2021	CY 2022	CY 2023
Total Crashes	823	892	891	748
Fatal Crashes	6	8	8	3
Injury Crashes	238	252	267	216
Distracted Driving-Related Fatal Crashes	0	0	0	0
Percent of Distracted Driving-Related Fatal Crashes to Total Fatal Crashes	0%	0%	0%	0%
Distracted Driving-Related Injury Crashes	56	44	45	26
Percent of Distracted Driving-Related Injury Crashes to Total Injury Crashes	24%	17%	17%	12%