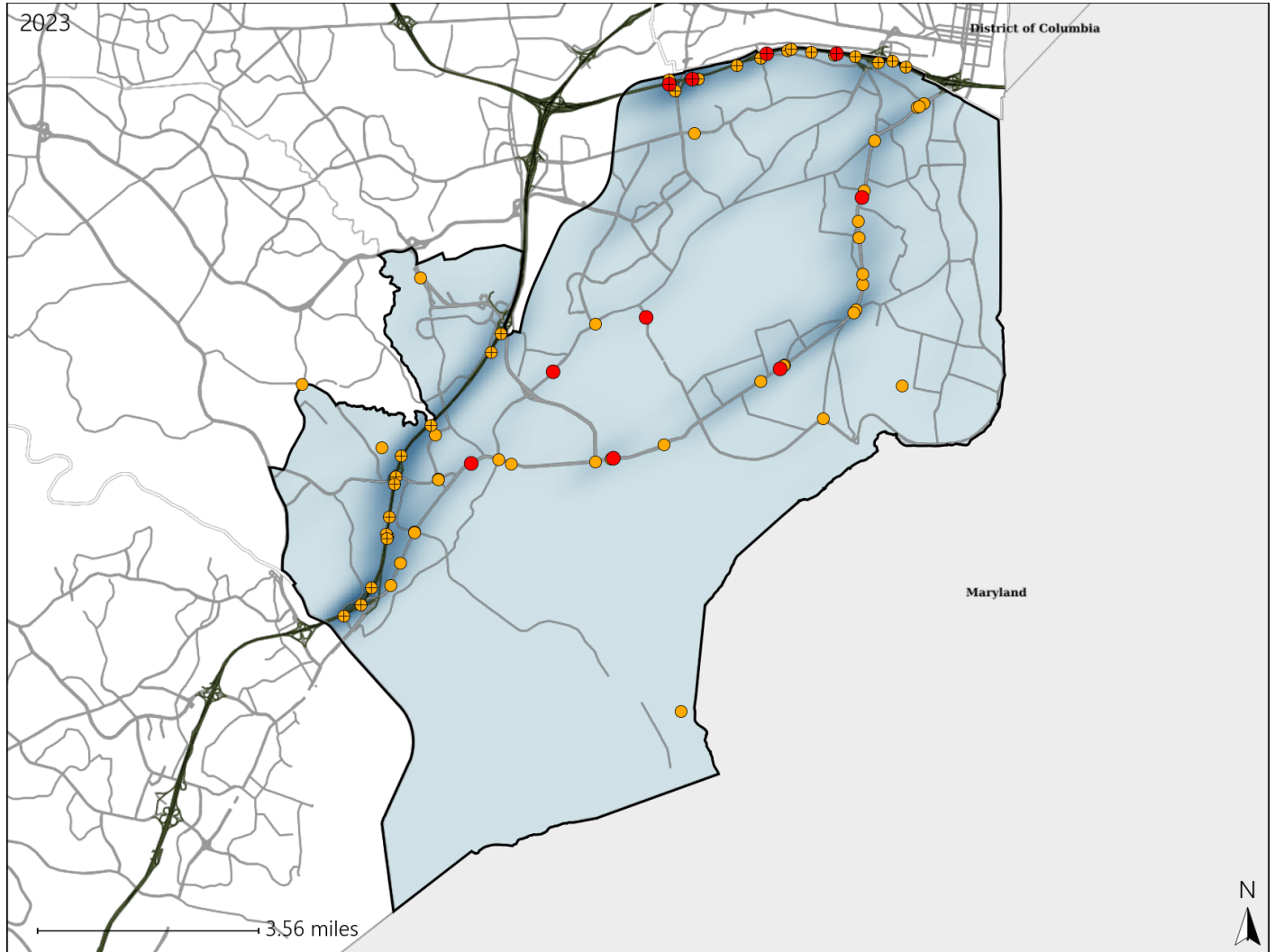


Virginia Senate District 34 Crash Statistics

Report Generated May, 2024

	Count	Highest Time Period(s)	Highest Day(s)	Highest Month(s)
Fatal Crashes	10	3:00am - 5:59am	Friday	April + March
Resulting Fatalities	11	9:00pm - 11:59pm (60%)	(30%)	(40%)
Serious Injury Crashes	61	6:00pm - 8:59pm (20%)	Wednesday (26%)	September (21%)



Senate District 34 Crashes

Interstate Crashes

- Fatal
- Serious Injury

Non-interstate Crashes

- Fatal
- Serious Injury

The blue gradient represents the density of all crashes.

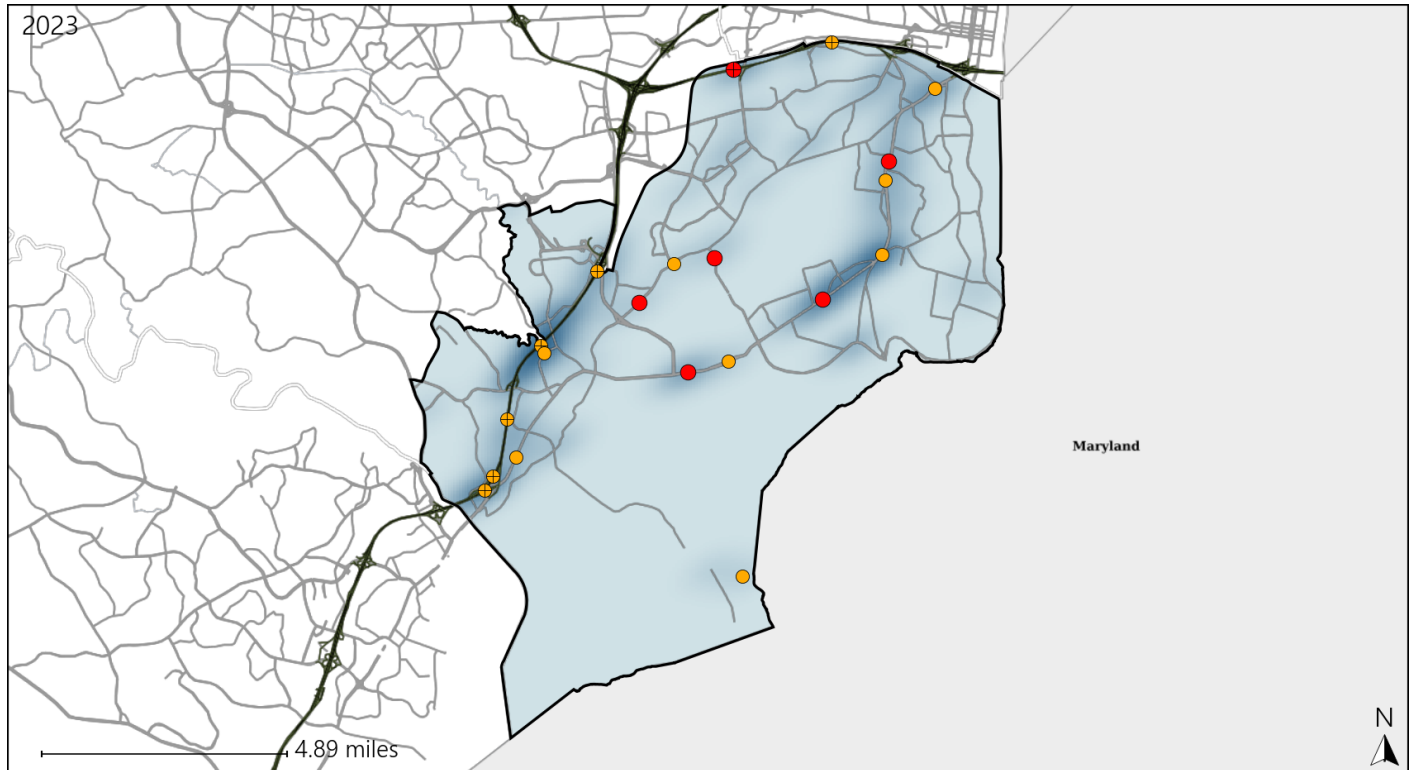


Available Crash Data - Calendar Year (CY)	CY 2020	CY 2021	CY 2022	CY 2023
Total Crashes	1484	1683	2029	2141
Fatal Crashes	13	12	14	10
Injury Crashes	407	509	585	629

Virginia Senate District 34 Alcohol Crash Statistics

Report Generated May, 2024

	Count	Highest Time Period(s)	Highest Day(s)	Highest Month(s)
Fatal Crashes	6	9:00pm - 11:59pm	Friday	March - October
Resulting Fatalities	6	(50%)	(33%)	(66%)
Serious Injury Crashes	14	6:00pm - 8:59pm	Friday - Saturday	September
		(43%)	(42%)	(29%)



Senate District 34 Alcohol-Related Crashes

Interstate Crashes Non-interstate Crashes
 ● Fatal ● Fatal
 ⊕ Serious Injury ⊕ Serious Injury

The blue gradient represents the density of all alcohol-related crashes.

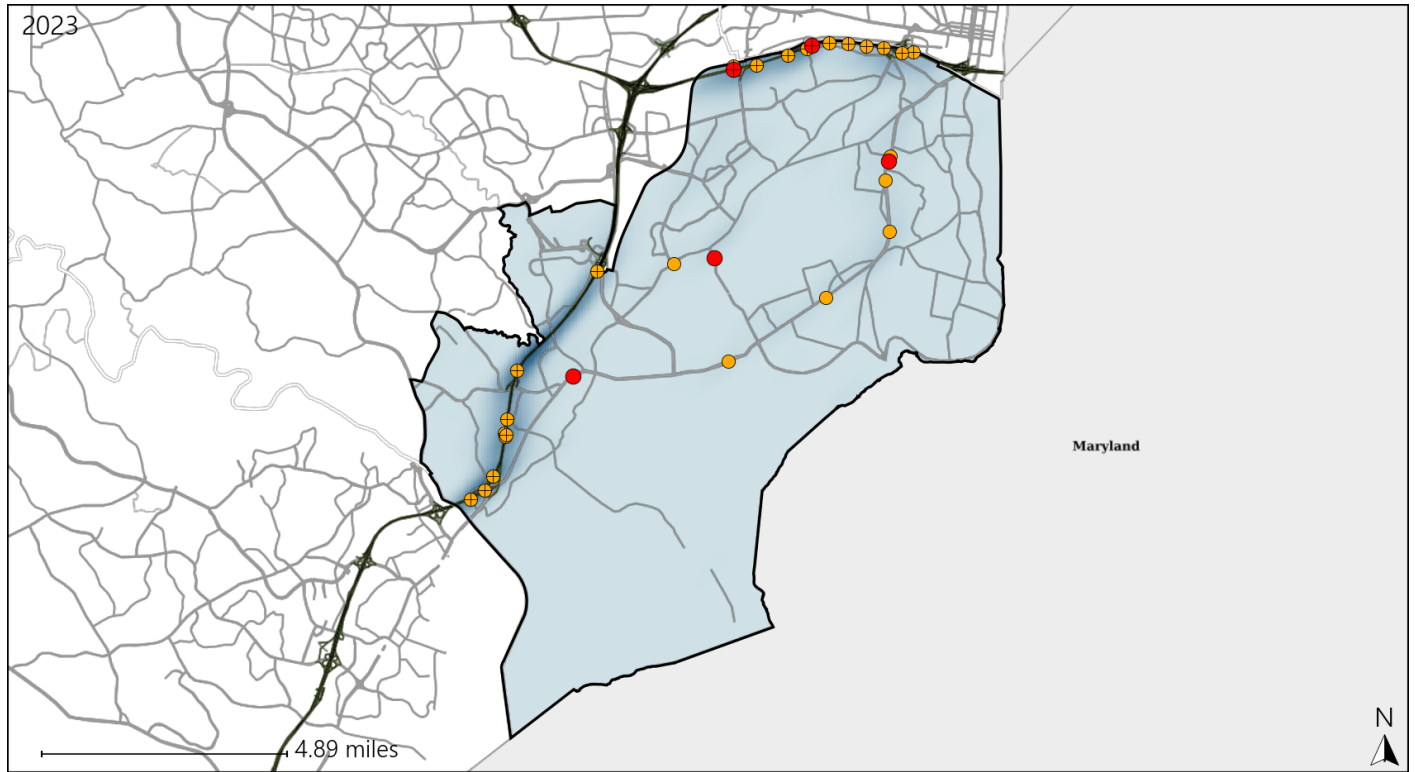


Available Crash Data - Calendar Year (CY)	CY 2020	CY 2021	CY 2022	CY 2023
Total Crashes	1484	1683	2029	2141
Fatal Crashes	13	12	14	10
Injury Crashes	407	509	585	629
Alcohol-Related Fatal Crashes	5	4	7	6
Percent of Alcohol-Related Fatal Crashes to Total Fatal Crashes	38%	33%	50%	60%
Alcohol-Related Injury Crashes	29	39	34	42
Percent of Alcohol-Related Injury Crashes to Total Injury Crashes	7%	8%	6%	7%

Virginia Senate District 34 Speed Crash Statistics

Report Generated May, 2024

	Count	Highest Time Period(s)	Highest Day(s)	Highest Month(s)
Fatal Crashes	5	9:00pm - 11:59pm	Saturday	March
Resulting Fatalities	5	(40%)	(40%)	(40%)
Serious Injury Crashes	25	6:00pm - 8:59pm	Wednesday	September
		(24%)	(24%)	(20%)



Senate District 34 Speed-Related Crashes

Interstate Crashes Non-interstate Crashes
 ● Fatal ● Fatal
 ⊕ Serious Injury ⊕ Serious Injury

The blue gradient represents the density of all speed-related crashes.

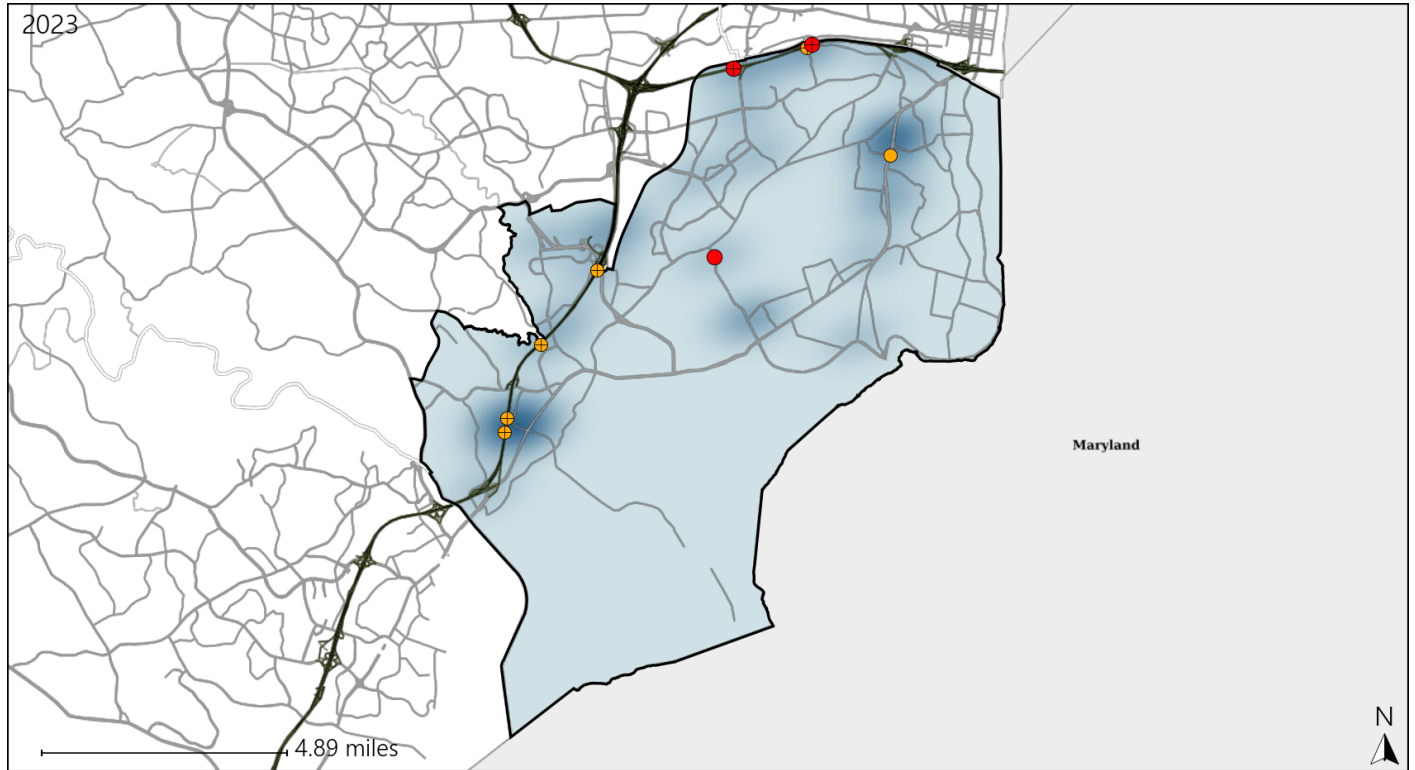


Available Crash Data - Calendar Year (CY)	CY 2020	CY 2021	CY 2022	CY 2023
Total Crashes	1484	1683	2029	2141
Fatal Crashes	13	12	14	10
Injury Crashes	407	509	585	629
Speed-Related Fatal Crashes	8	5	7	5
Percent of Speed-Related Fatal Crashes to Total Fatal Crashes	62%	42%	50%	50%
Speed-Related Injury Crashes	129	186	181	184
Percent of Speed-Related Injury Crashes to Total Injury Crashes	32%	37%	31%	29%

Virginia Senate District 34 Unrestrained Crash Statistics

Report Generated May, 2024

	Count	Highest Time Period(s)	Highest Day(s)	Highest Month(s)
Fatal Crashes	3	3:00am - 5:59am	Monday • Saturday	July • March
Unrestrained Fatalities	3	9:00pm - 11:59pm (66%)	(66%)	(66%)
Serious Injury Crashes	6	Midnight - 2:59am (50%)	Sunday (33%)	March (33%)



Senate District 34 Unrestrained-Related Crashes

Interstate Crashes

- Fatal
- Serious Injury

Non-interstate Crashes

- Fatal
- Serious Injury

The blue gradient represents the density of all unrestrained-related crashes.

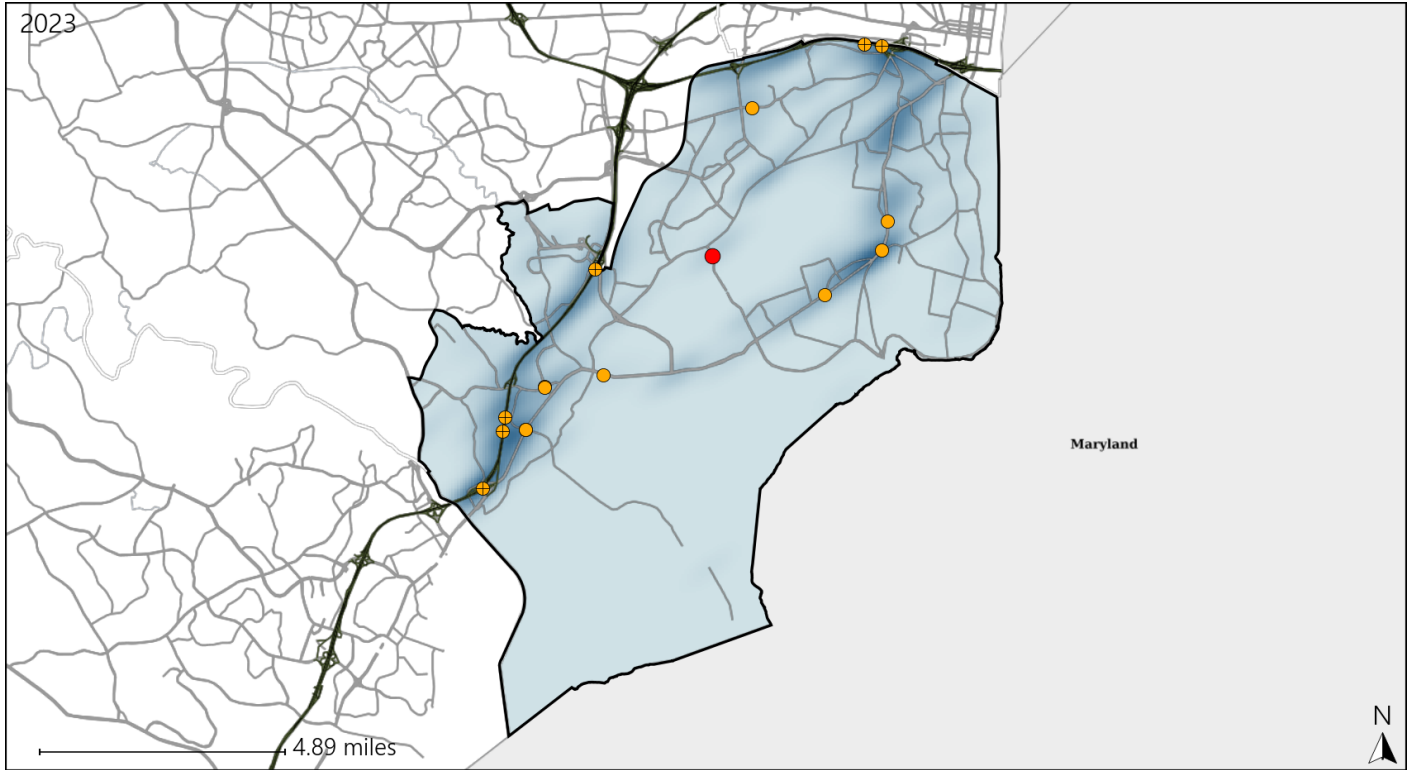


Available Crash Data - Calendar Year (CY)	CY 2020	CY 2021	CY 2022	CY 2023
Total Crashes	1484	1683	2029	2141
Fatalities	13	12	15	11
Injuries	626	824	951	989
Unrestrained Fatalities	4	2	3	3
Percent of Unrestrained Fatalities to Total Fatalities	31%	17%	20%	27%
Unrestrained Injuries	19	32	24	37
Percent of Unrestrained Injuries to Total Injuries	3%	4%	3%	4%

Virginia Senate District 34 Distracted Driving Crash Statistics

Report Generated May, 2024

	Count	Highest Time Period(s)	Highest Day(s)	Highest Month(s)
Fatal Crashes	1	9:00pm - 11:59pm	Monday	July
Resulting Fatalities	1	(100%)	(100%)	(100%)
Serious Injury Crashes	15	3:00pm - 5:59pm	Wednesday	September
		(33%)	(27%)	(33%)



Senate District 34 Distracted Driving-Related Crashes

- | | |
|--------------------|------------------------|
| Interstate Crashes | Non-interstate Crashes |
| Fatal | Fatal |
| Serious Injury | Serious Injury |

The blue gradient represents the density of all distracted driving-related crashes.



Available Crash Data - Calendar Year (CY)	CY 2020	CY 2021	CY 2022	CY 2023
Total Crashes	1484	1683	2029	2141
Fatal Crashes	13	12	14	10
Injury Crashes	407	509	585	629
Distracted Driving-Related Fatal Crashes	1	1	1	1
Percent of Distracted Driving-Related Fatal Crashes to Total Fatal Crashes	8%	8%	7%	10%
Distracted Driving-Related Injury Crashes	99	123	118	141
Percent of Distracted Driving-Related Injury Crashes to Total Injury Crashes	24%	24%	20%	22%